





Airspace Classification Review: Visualisations depicting controlled airspace and its use

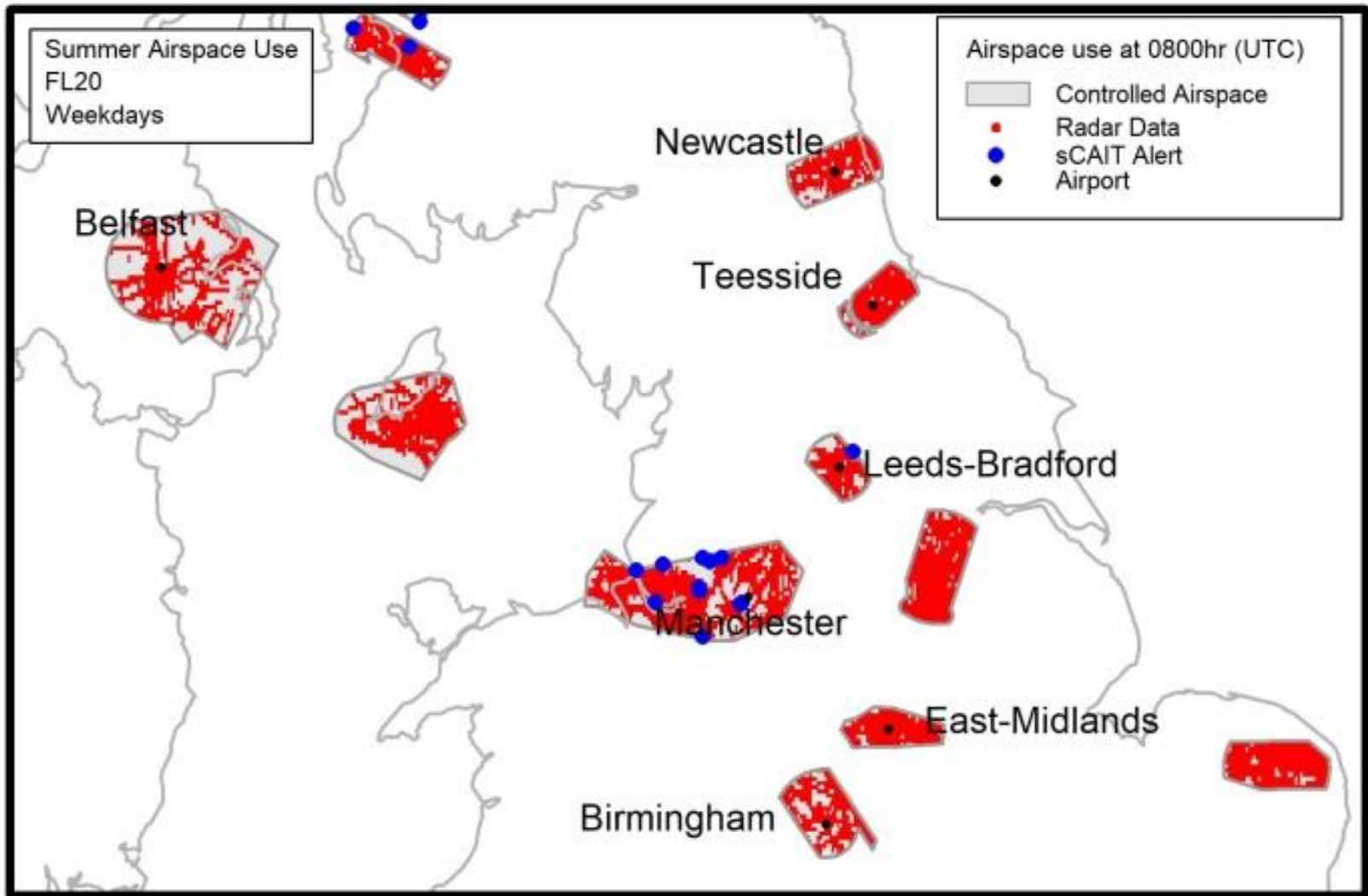
Central UK – Summer 2019

Weekdays

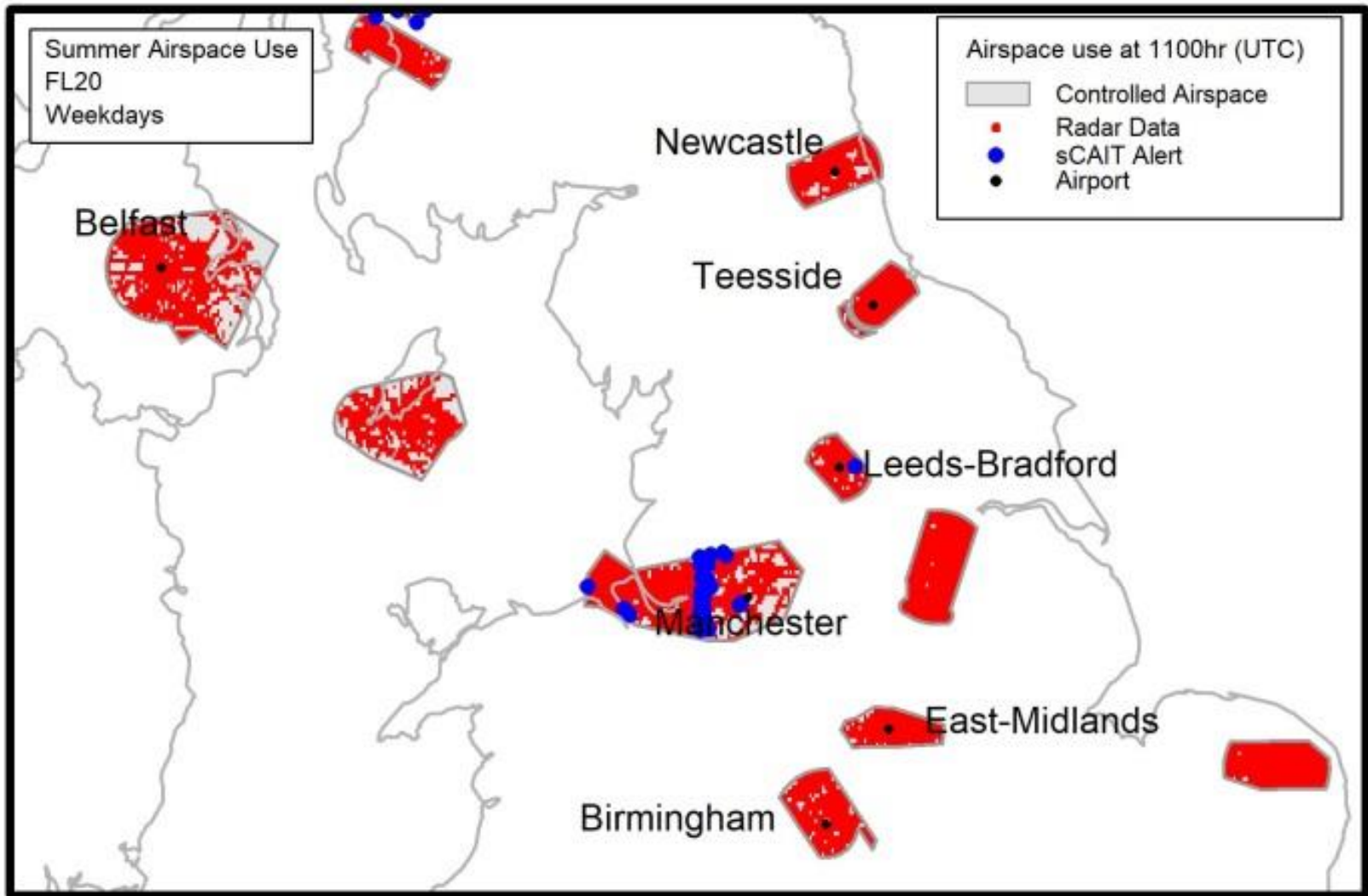
How to use the visualisation images

The following images have been provided by NATS and show how airspace is being used by region, flight level (FL) and at specified time slots during the summer and winter. The images depict all airspace activity over a three-month period within the identified parameters. The key below describes the different types of activity shown.

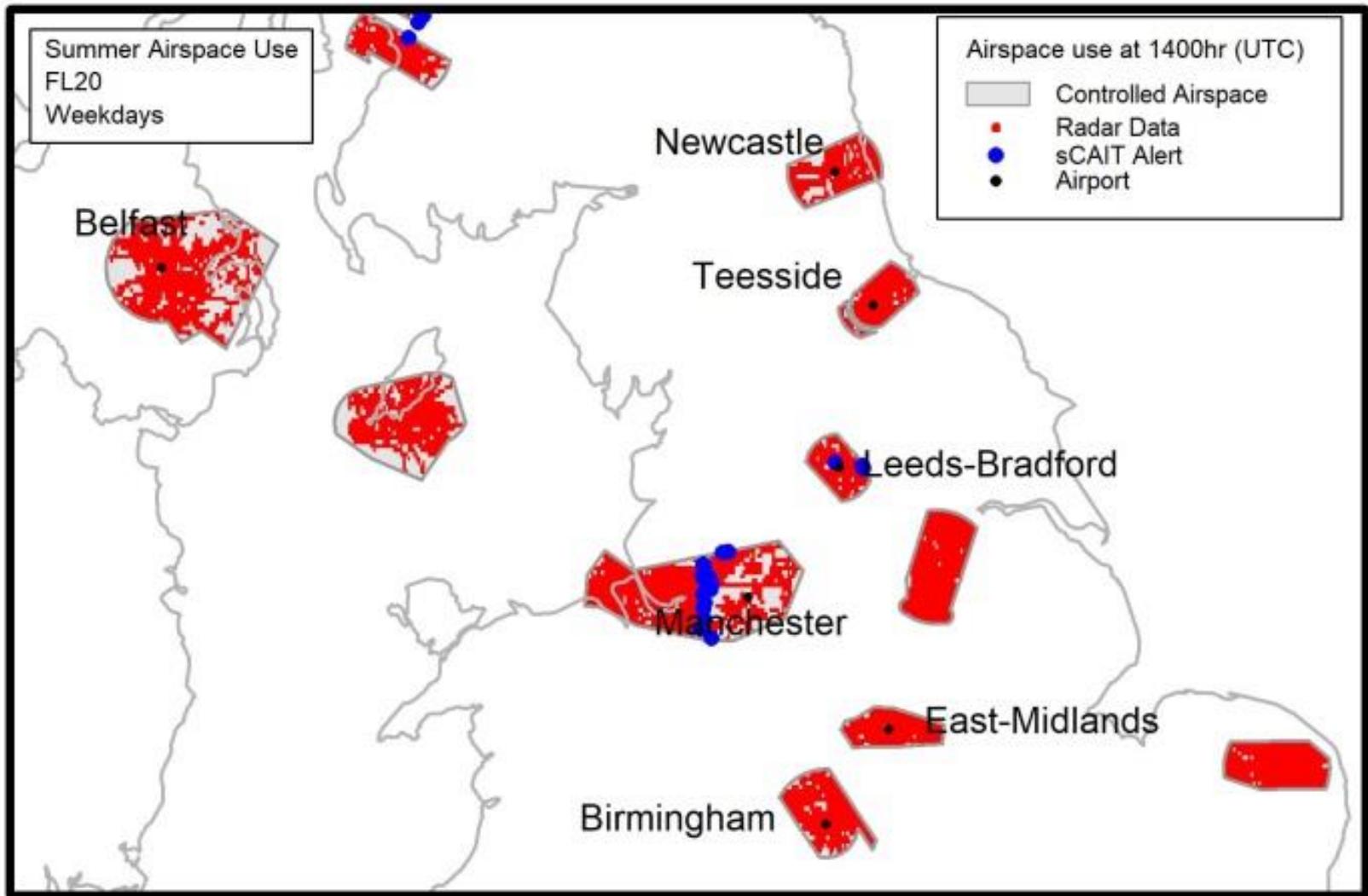
-  **Controlled Airspace:** includes all classes of airspace at the specified flight level
-  **Radar Data / Airspace Use:** indicates where aircraft using the controlled airspace have flown according to stored radar data. This includes where aircraft have flown on designed routes (such as SIDs and STARs) and also where aircraft have flown in response to air traffic control direction. The tracks shown are the combined ground tracks of arriving/ departing/ transiting air traffic over the period. This does include repeat traffic over the same ground track e.g. where repeat flights happen daily.
-  **sCAIT Alert:** indicates where one or more Controlled Airspace Infringements (aircraft entering airspace where they were not cleared by air traffic control to do so) have been reported during the three month period analysed
-  **Airport:** indicates the location of the airport



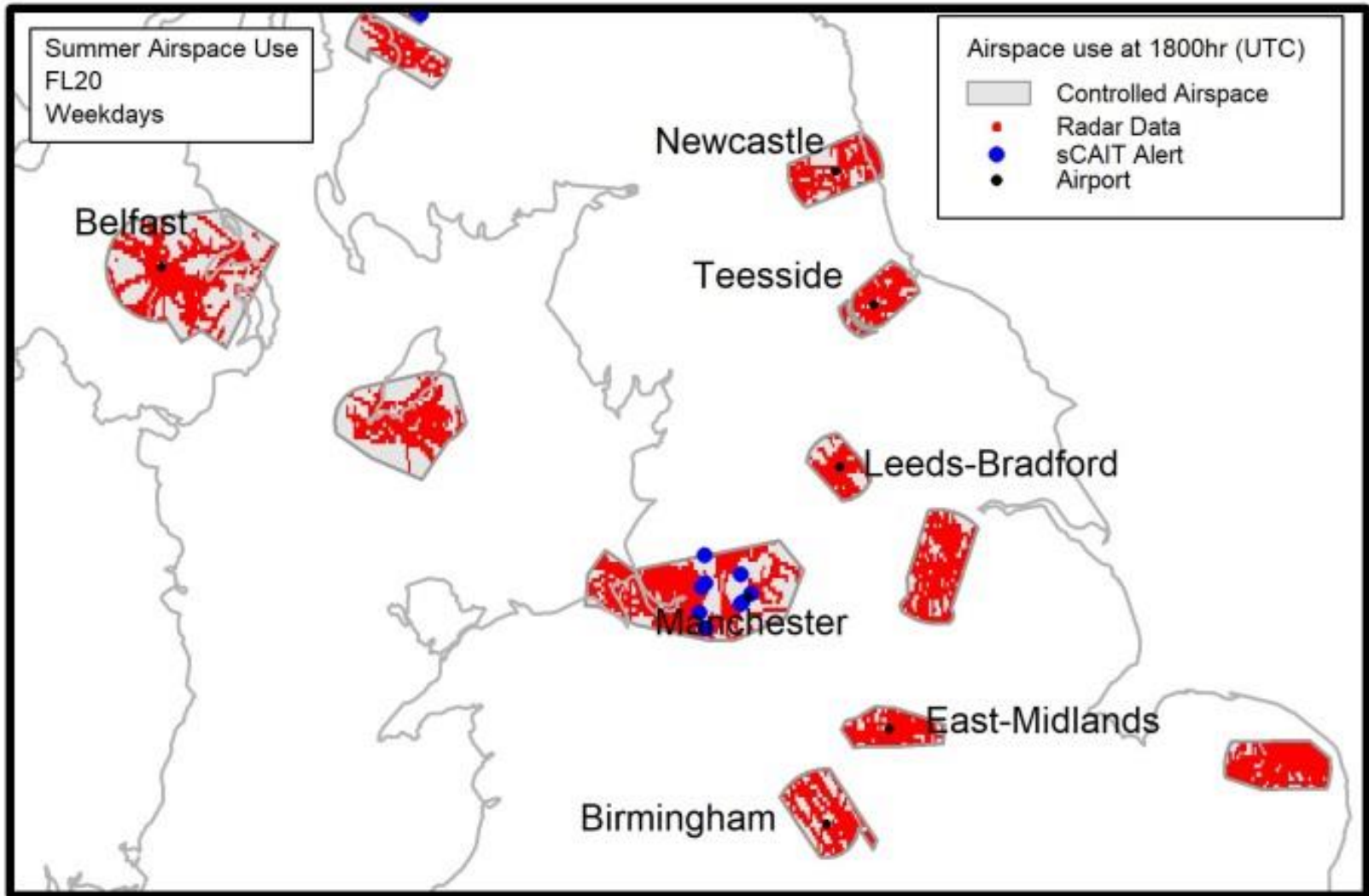
Central Summer Weekdays



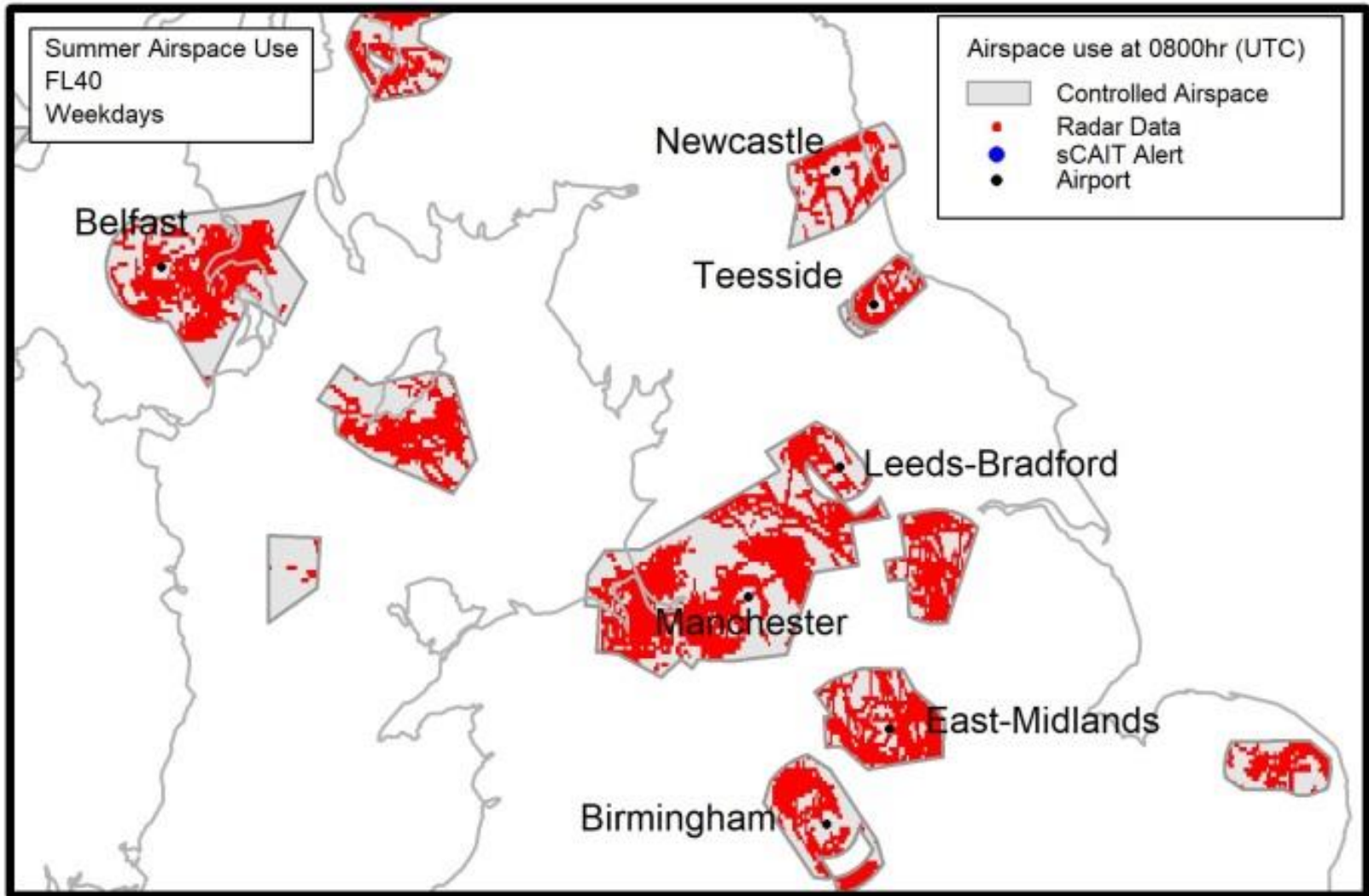
Central Summer Weekdays



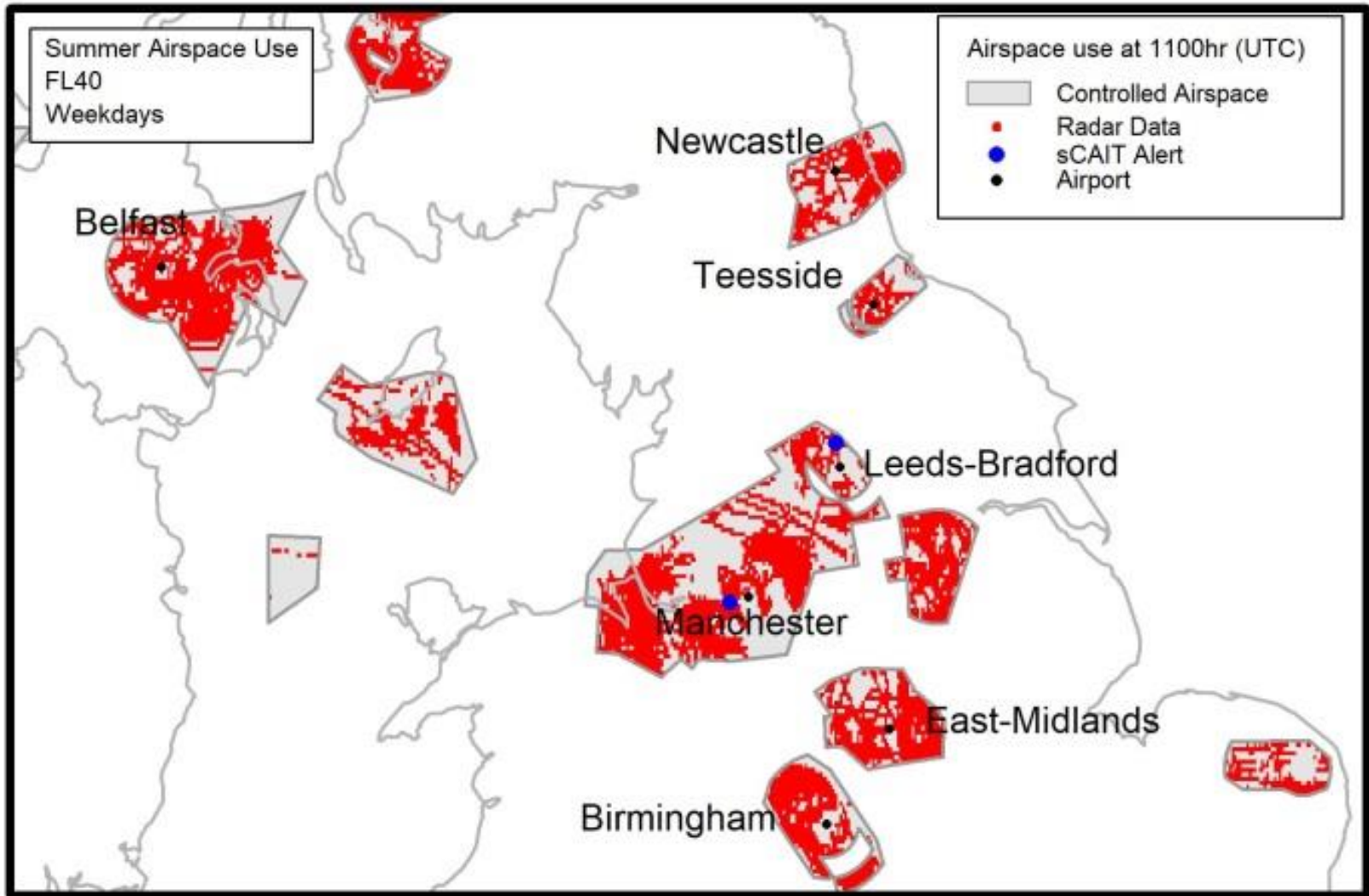
Central Summer Weekdays



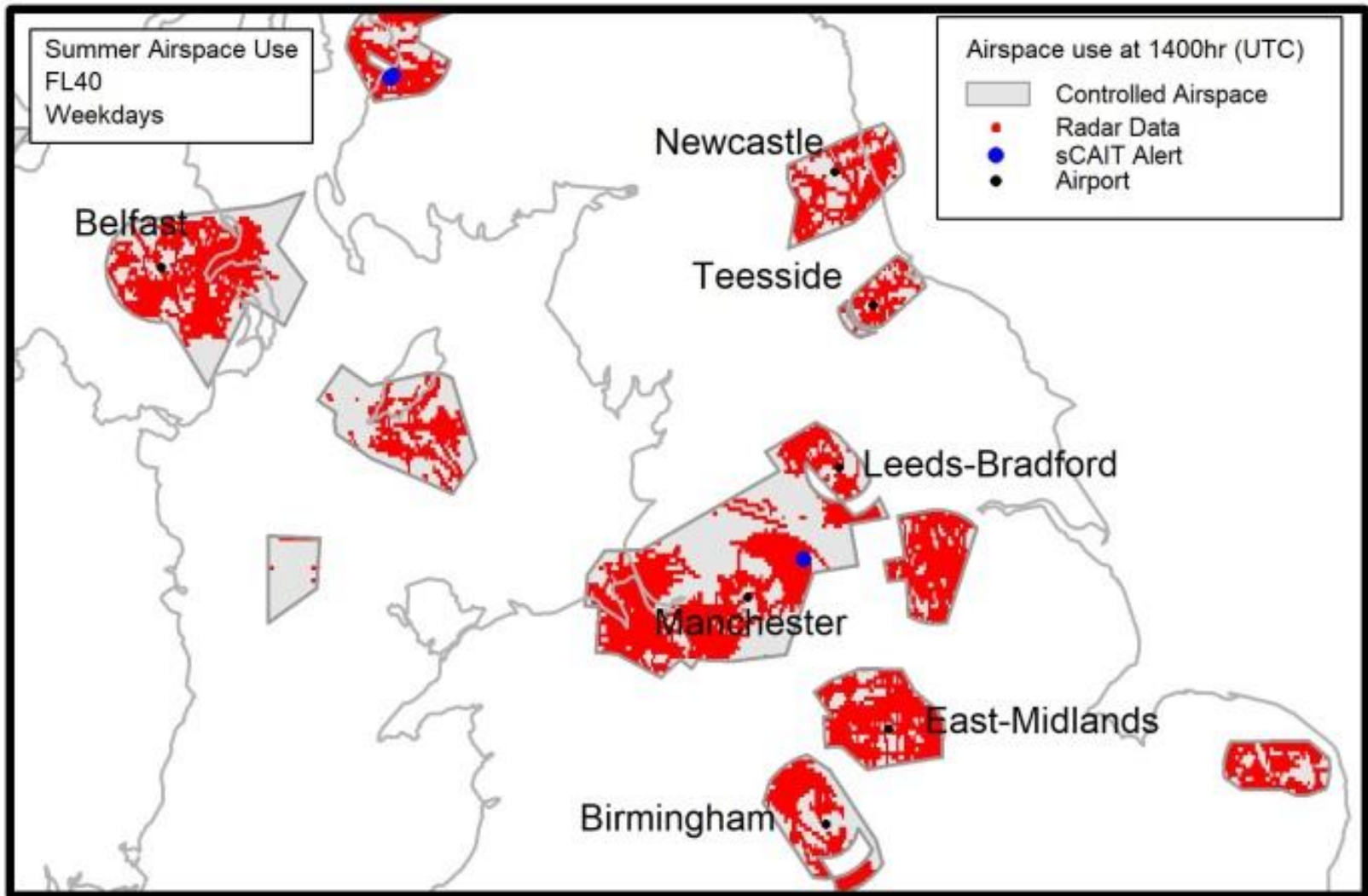
Central Summer Weekdays



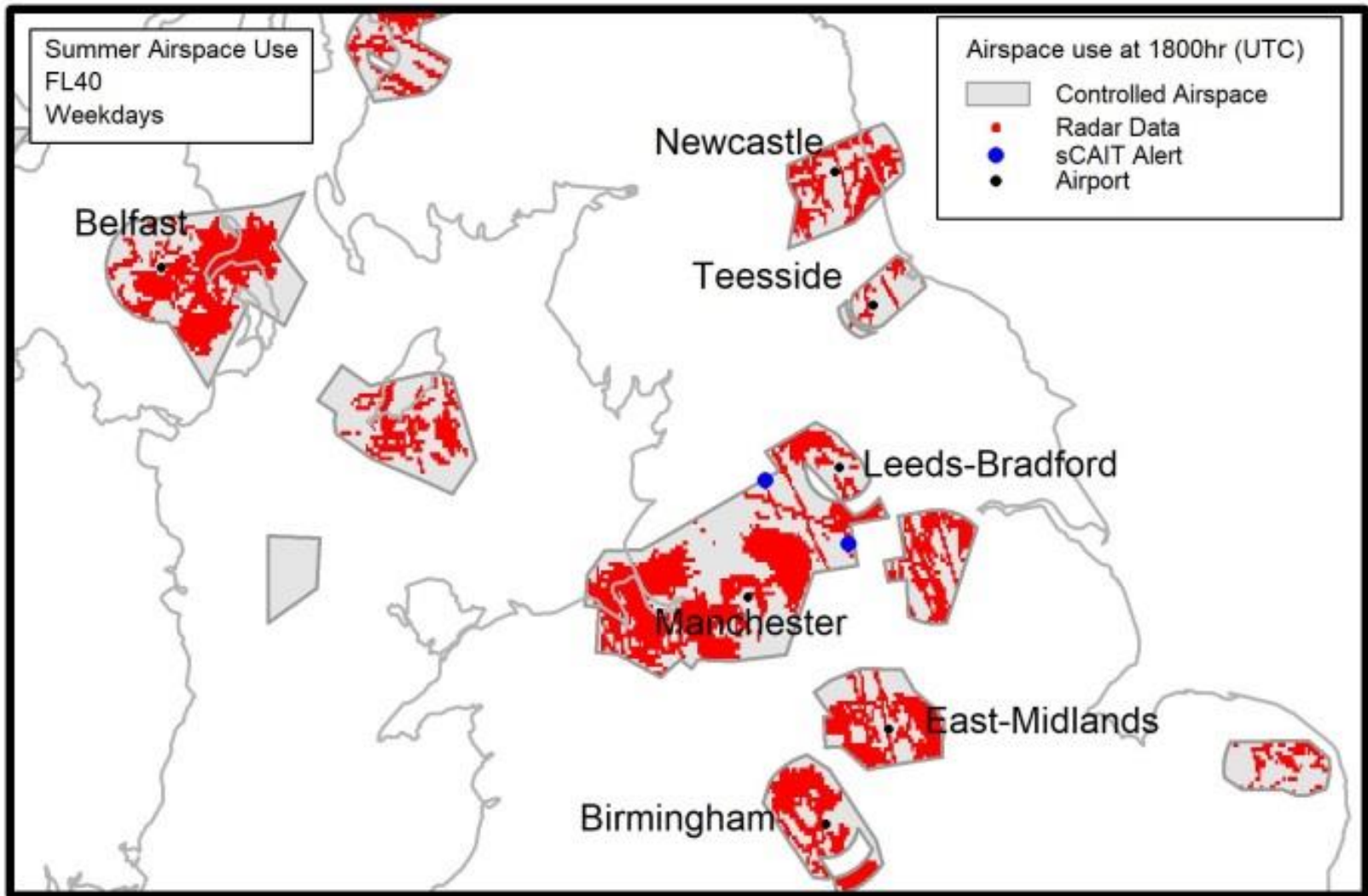
Central Summer Weekdays



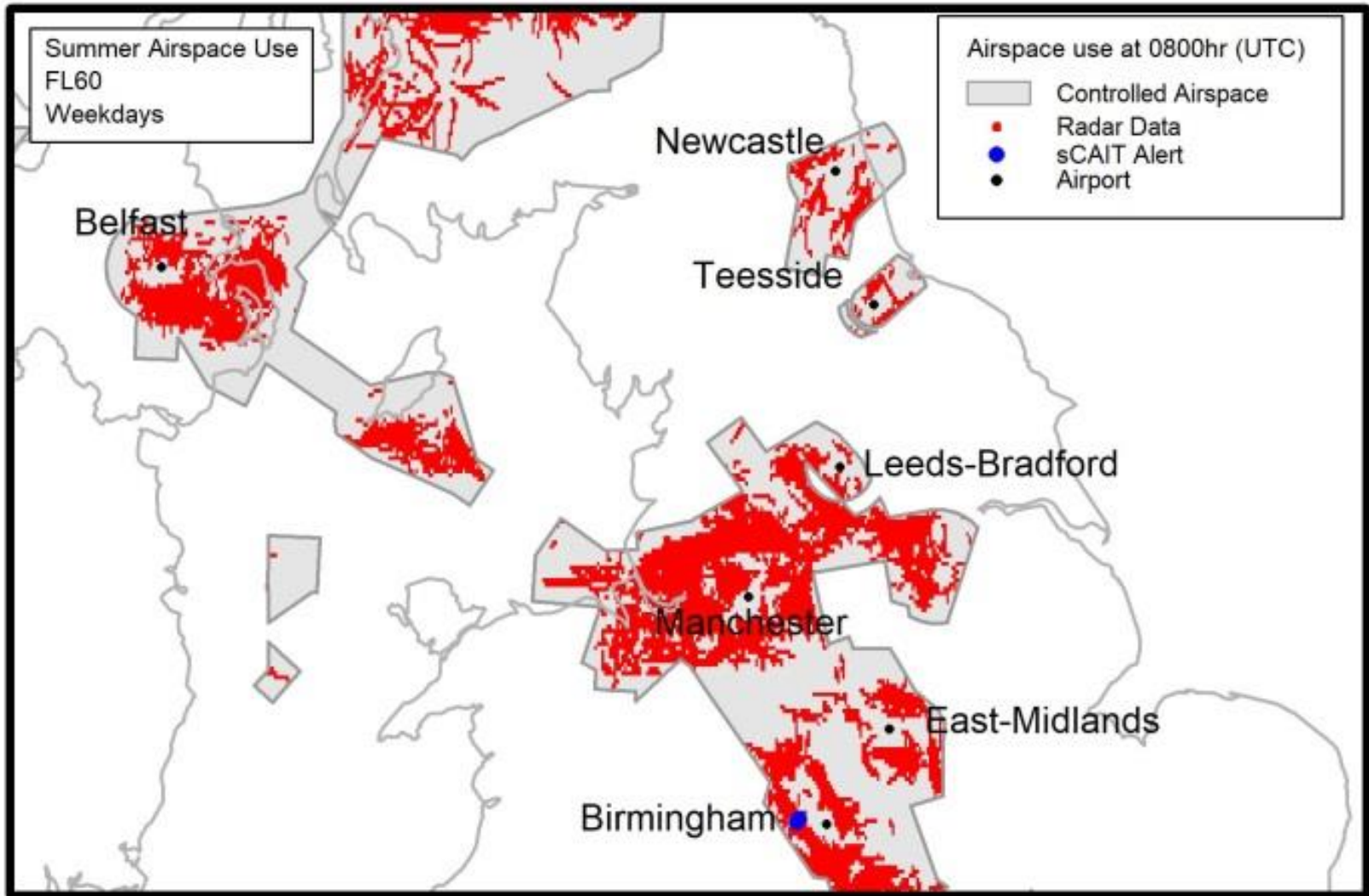
Central Summer Weekdays



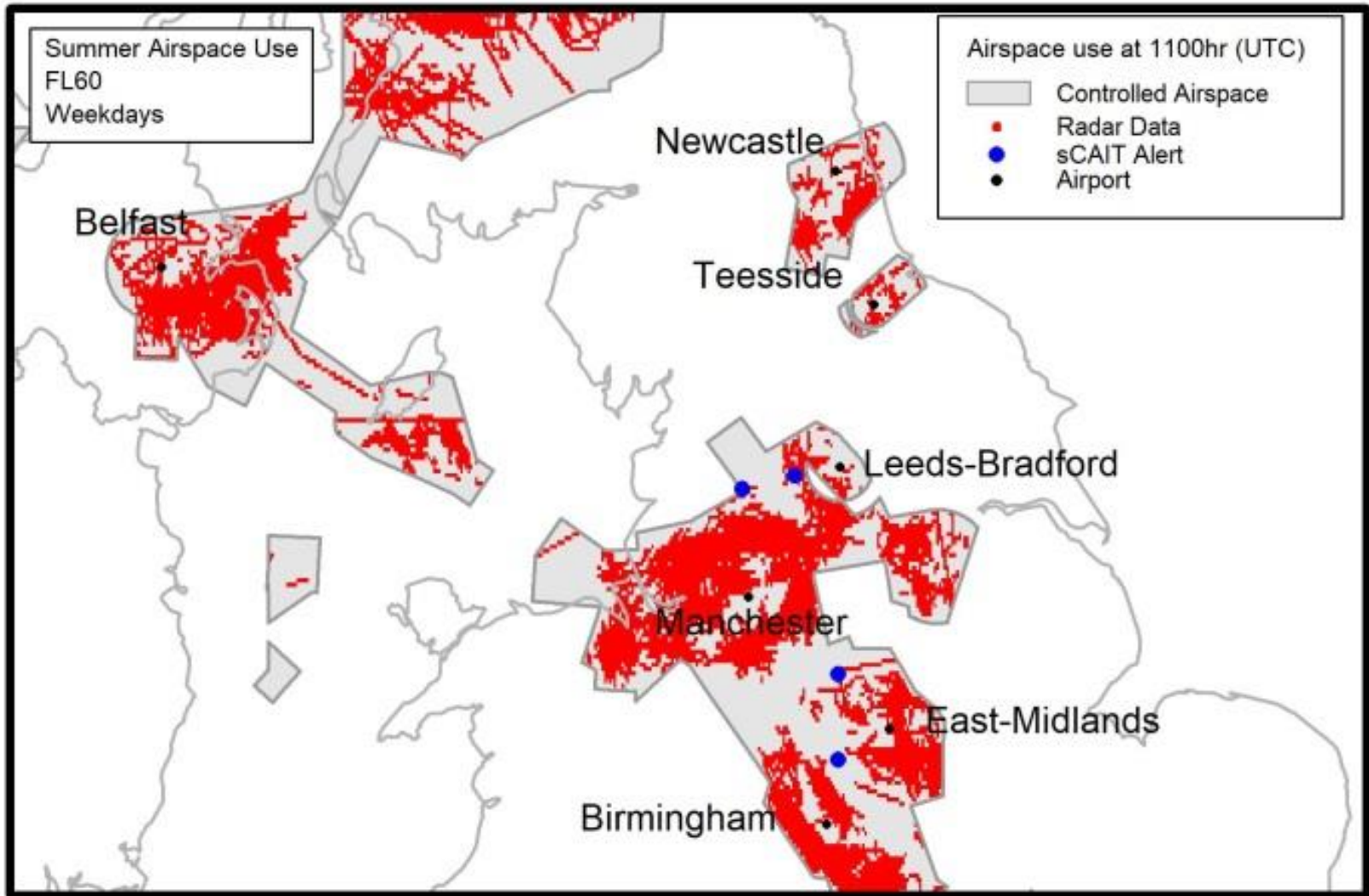
Central Summer Weekdays



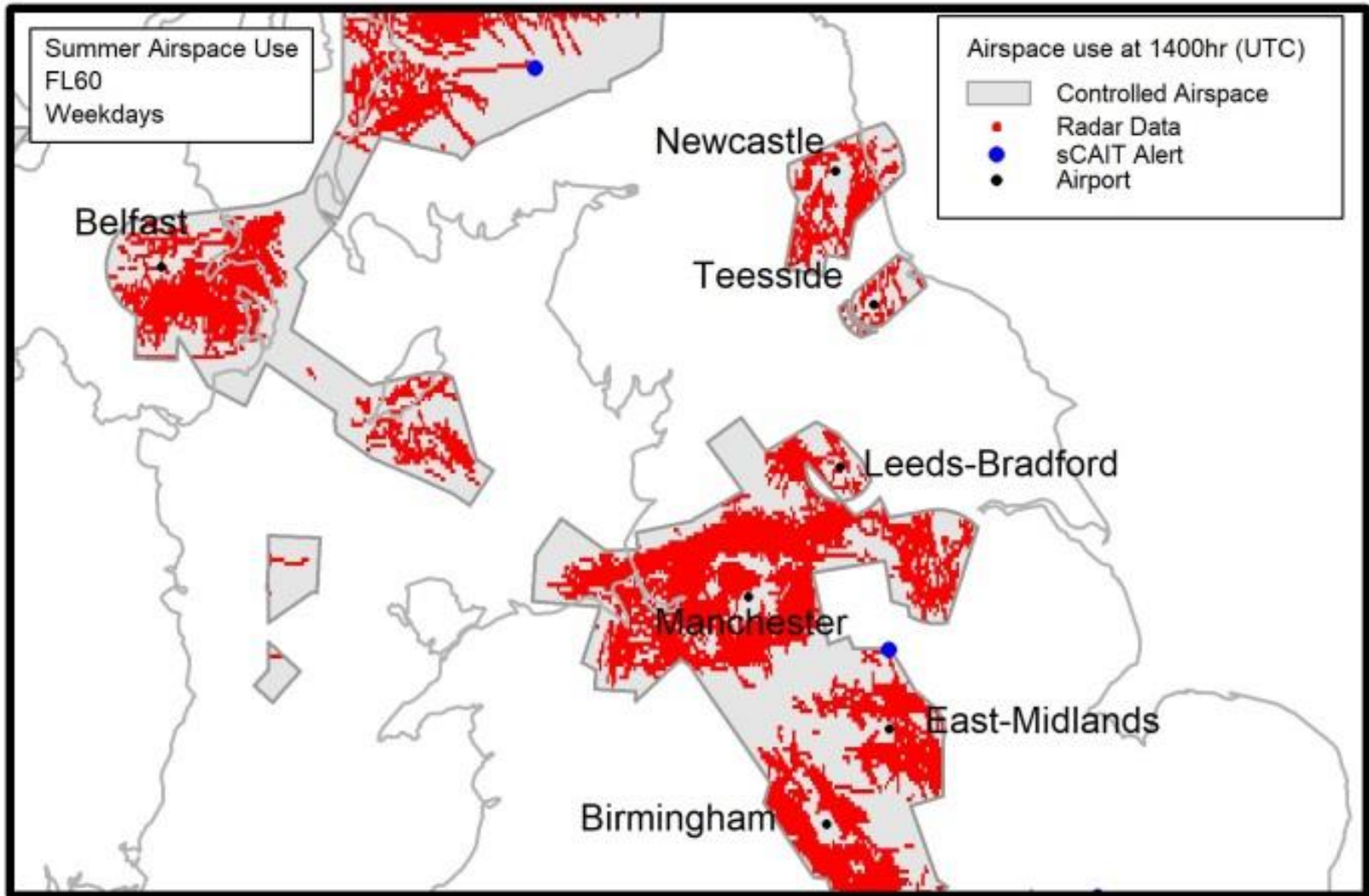
Central Summer Weekdays



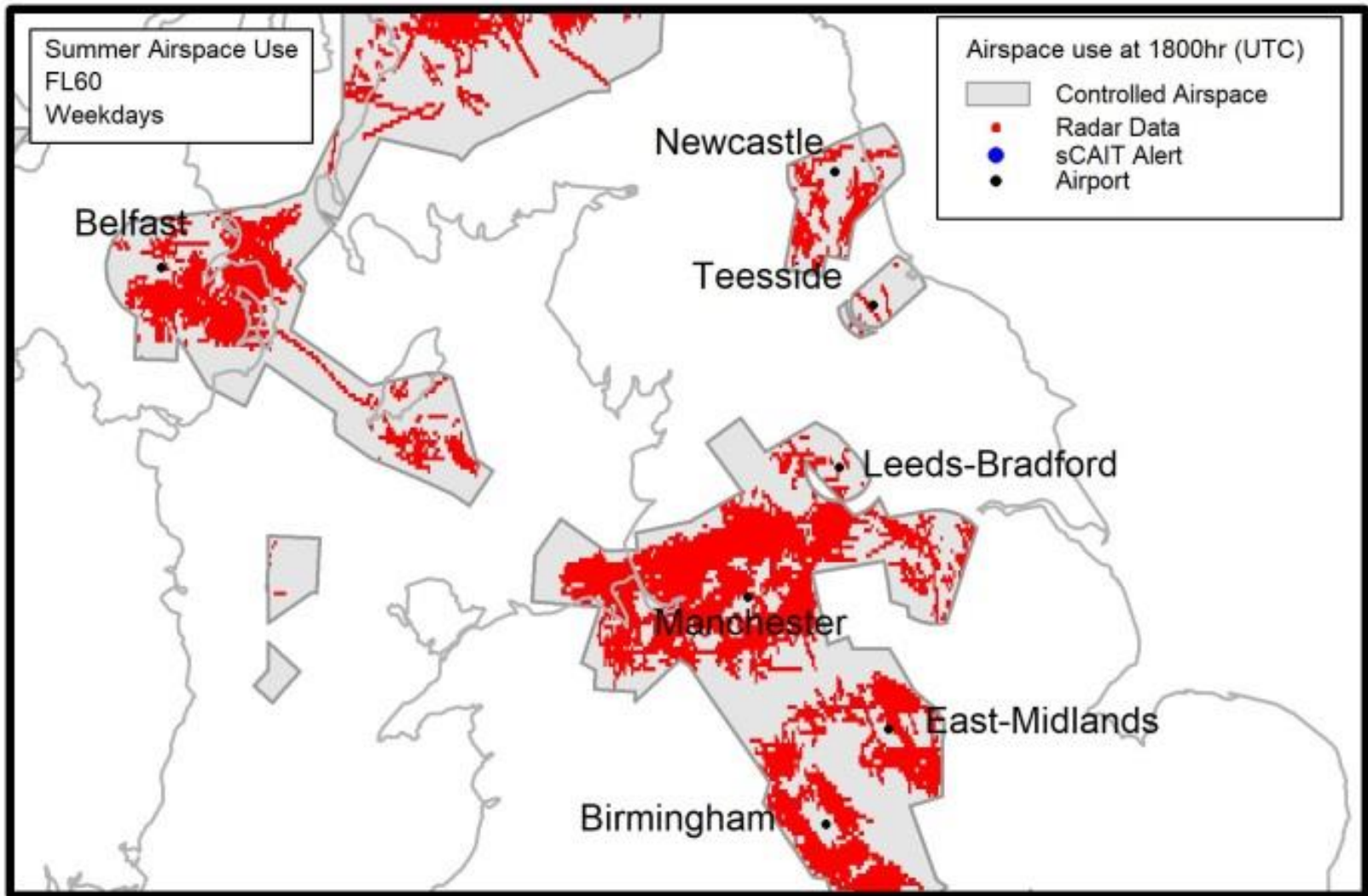
Central Summer Weekdays



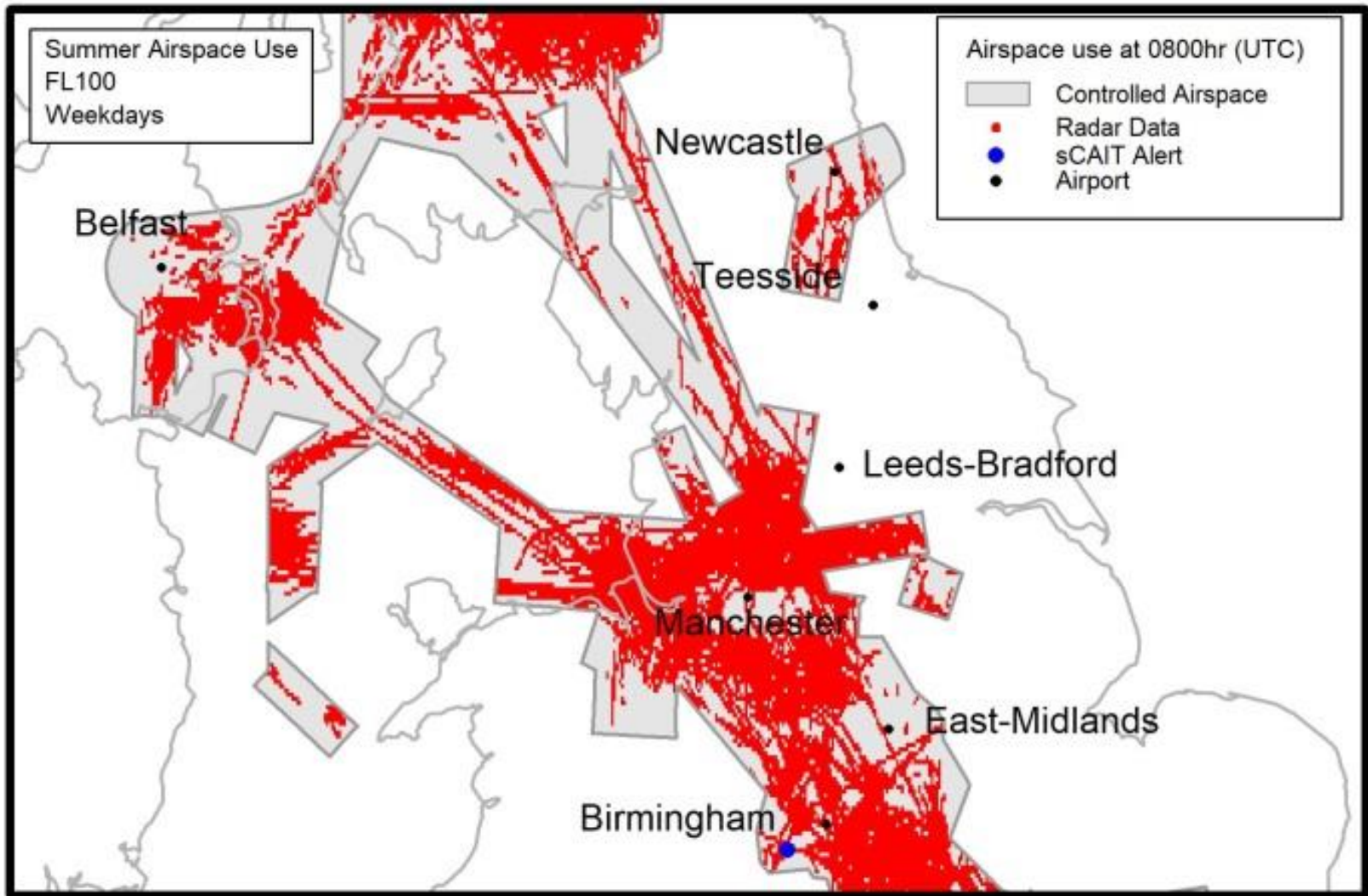
Central Summer Weekdays



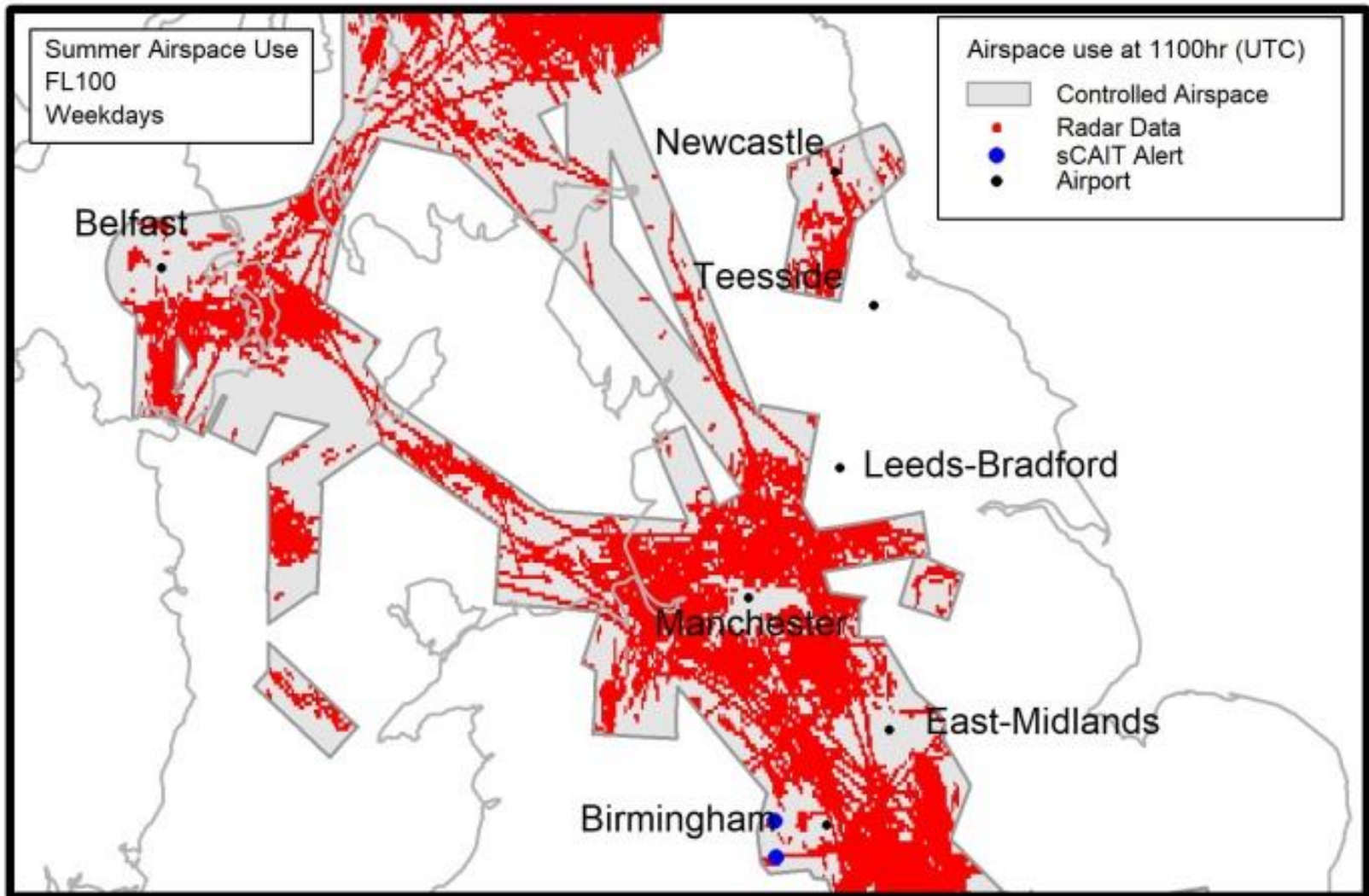
Central Summer Weekdays



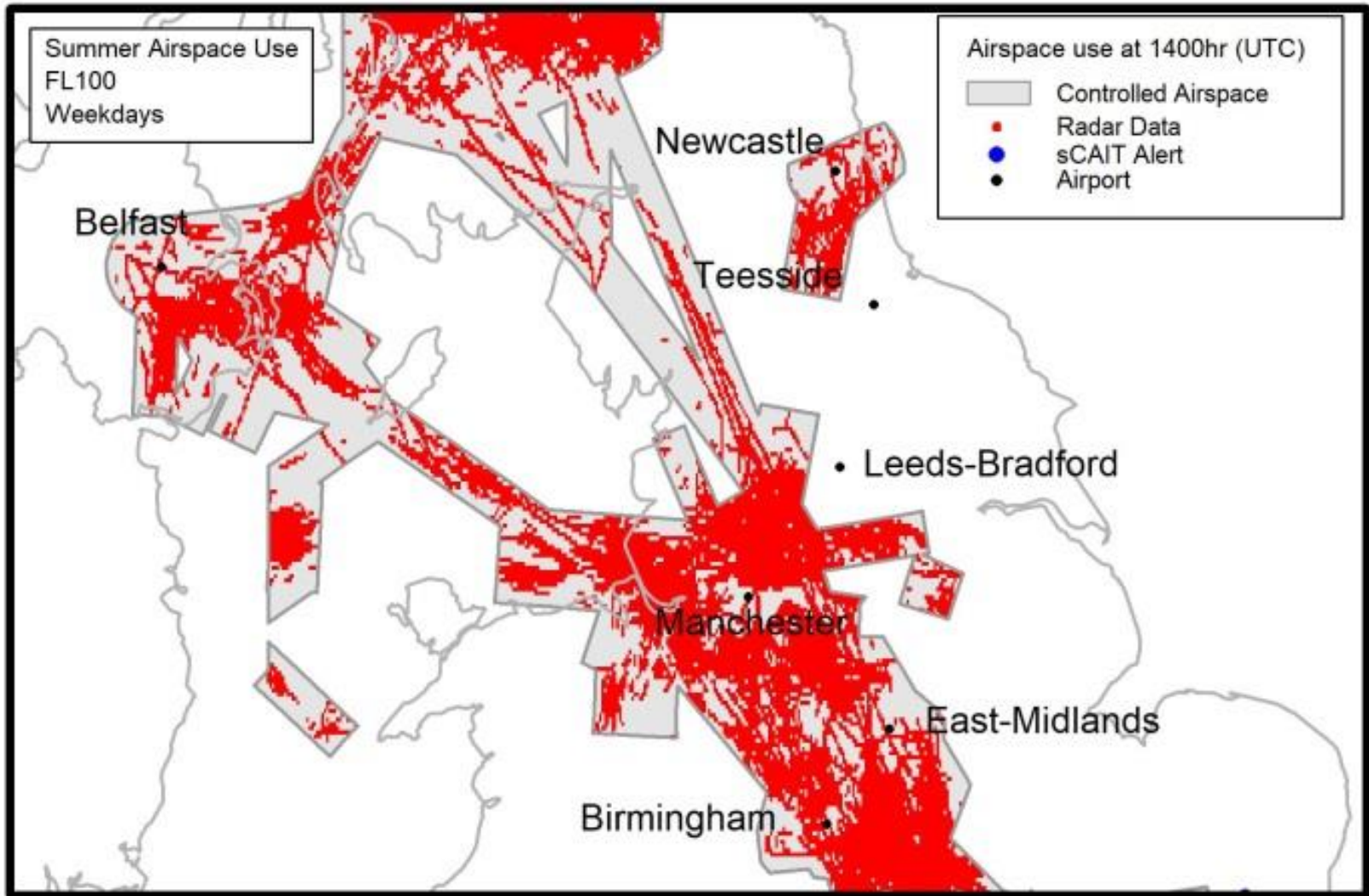
Central Summer Weekdays



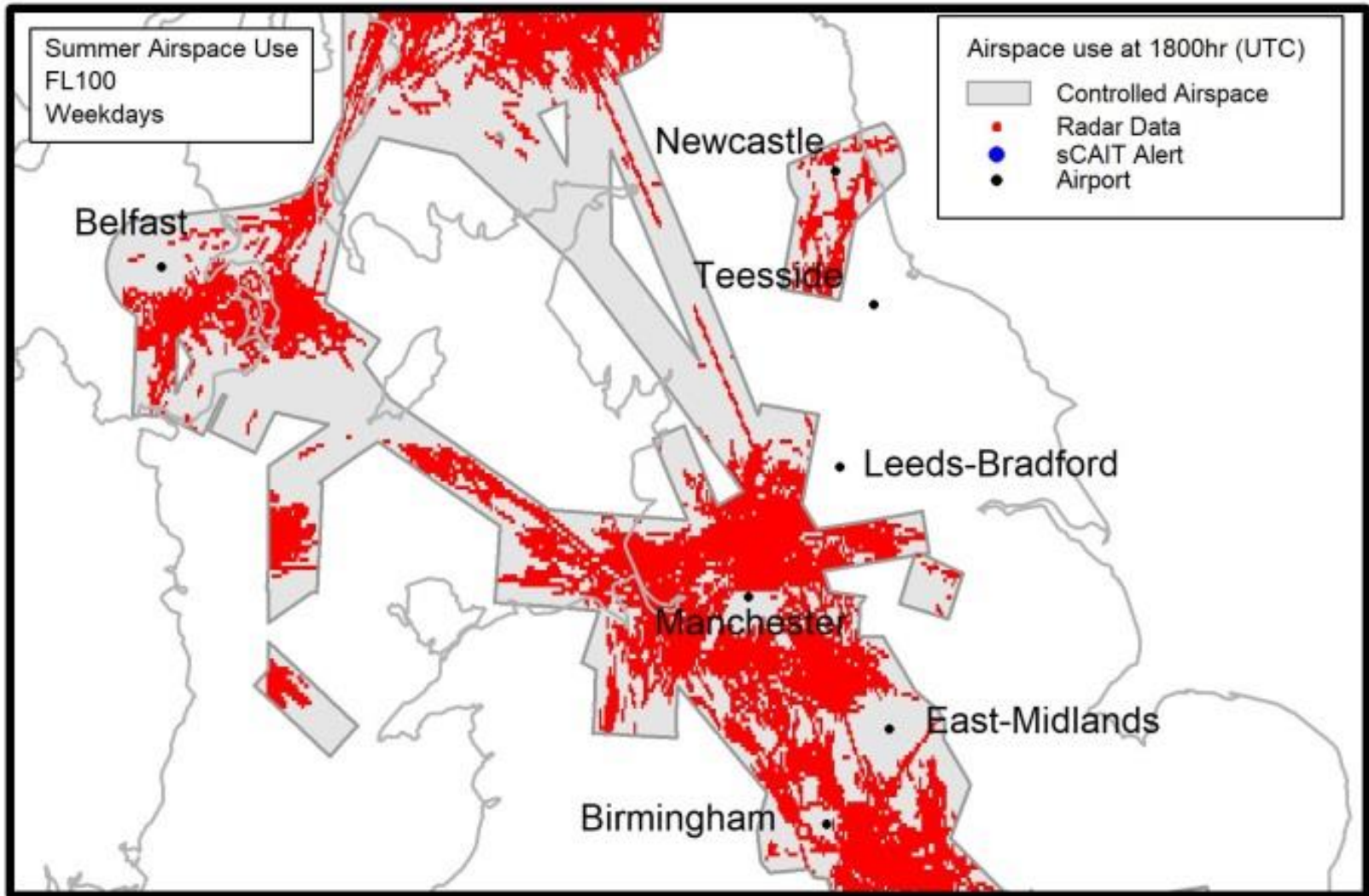
Central Summer Weekdays



Central Summer Weekdays



Central Summer Weekdays



Central Summer Weekdays





Airspace Classification Review: Visualisations depicting controlled airspace and its use

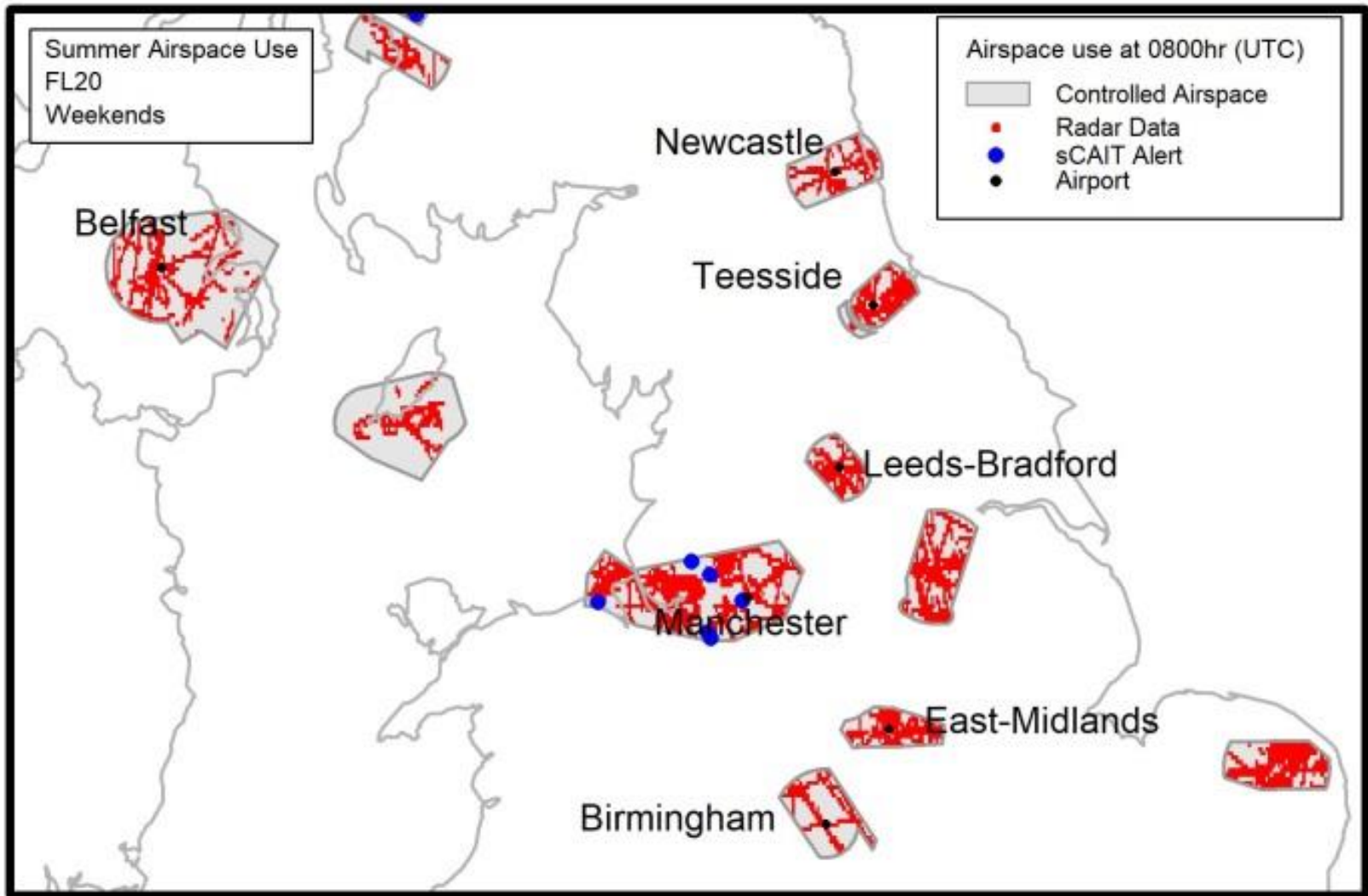
Central UK – Summer 2019

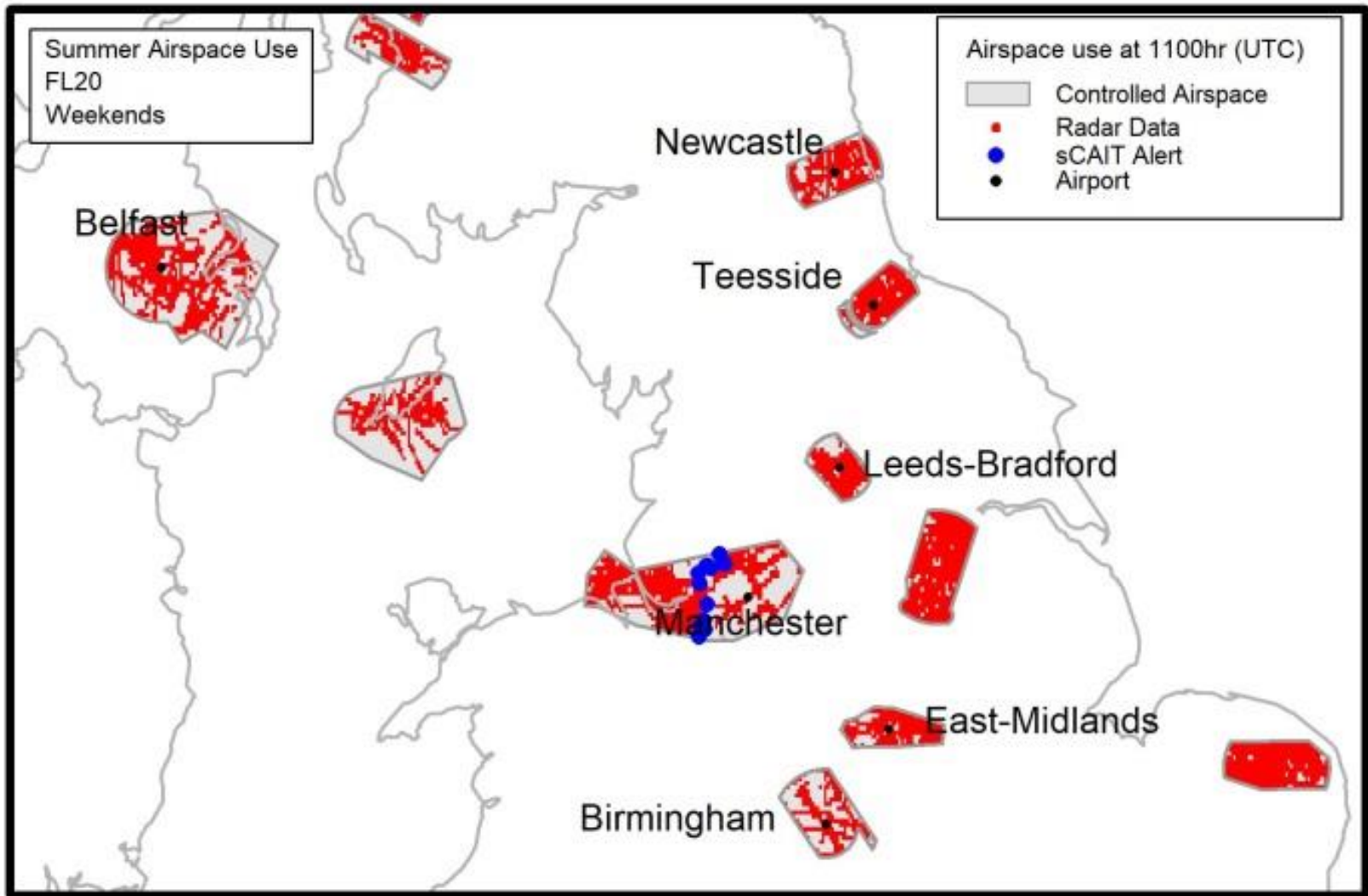
Weekends

How to use the visualisation images

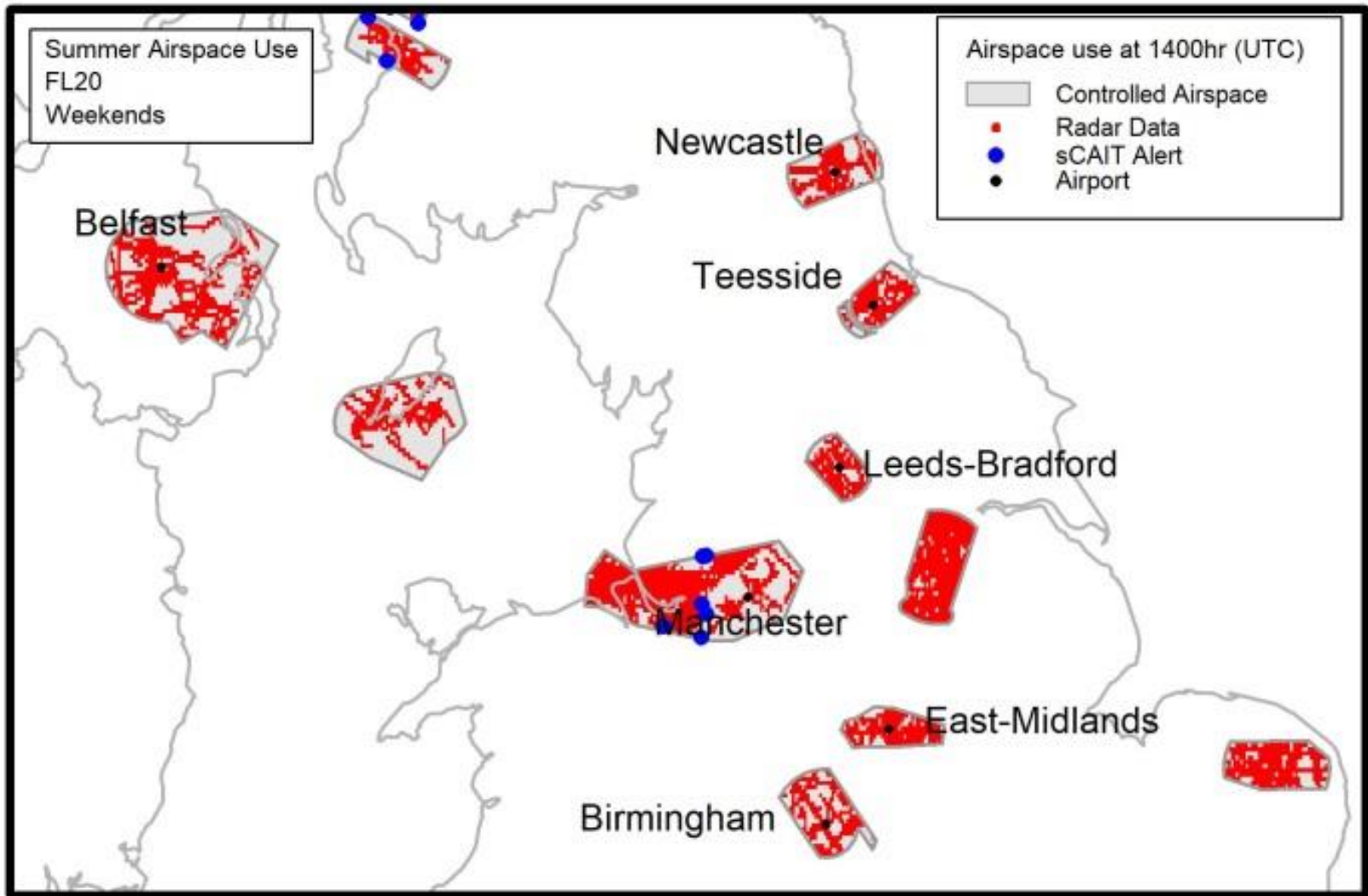
The following images have been provided by NATS and show how airspace is being used by region, flight level (FL) and at specified time slots during the summer and winter. The images depict all airspace activity over a three-month period within the identified parameters. The key below describes the different types of activity shown.

-  **Controlled Airspace:** includes all classes of airspace at the specified flight level
-  **Radar Data / Airspace Use:** indicates where aircraft using the controlled airspace have flown according to stored radar data. This includes where aircraft have flown on designed routes (such as SIDs and STARs) and also where aircraft have flown in response to air traffic control direction. The tracks shown are the combined ground tracks of arriving/ departing/ transiting air traffic over the period. This does include repeat traffic over the same ground track e.g. where repeat flights happen daily.
-  **sCAIT Alert:** indicates where one or more Controlled Airspace Infringements (aircraft entering airspace where they were not cleared by air traffic control to do so) have been reported during the three month period analysed
-  **Airport:** indicates the location of the airport

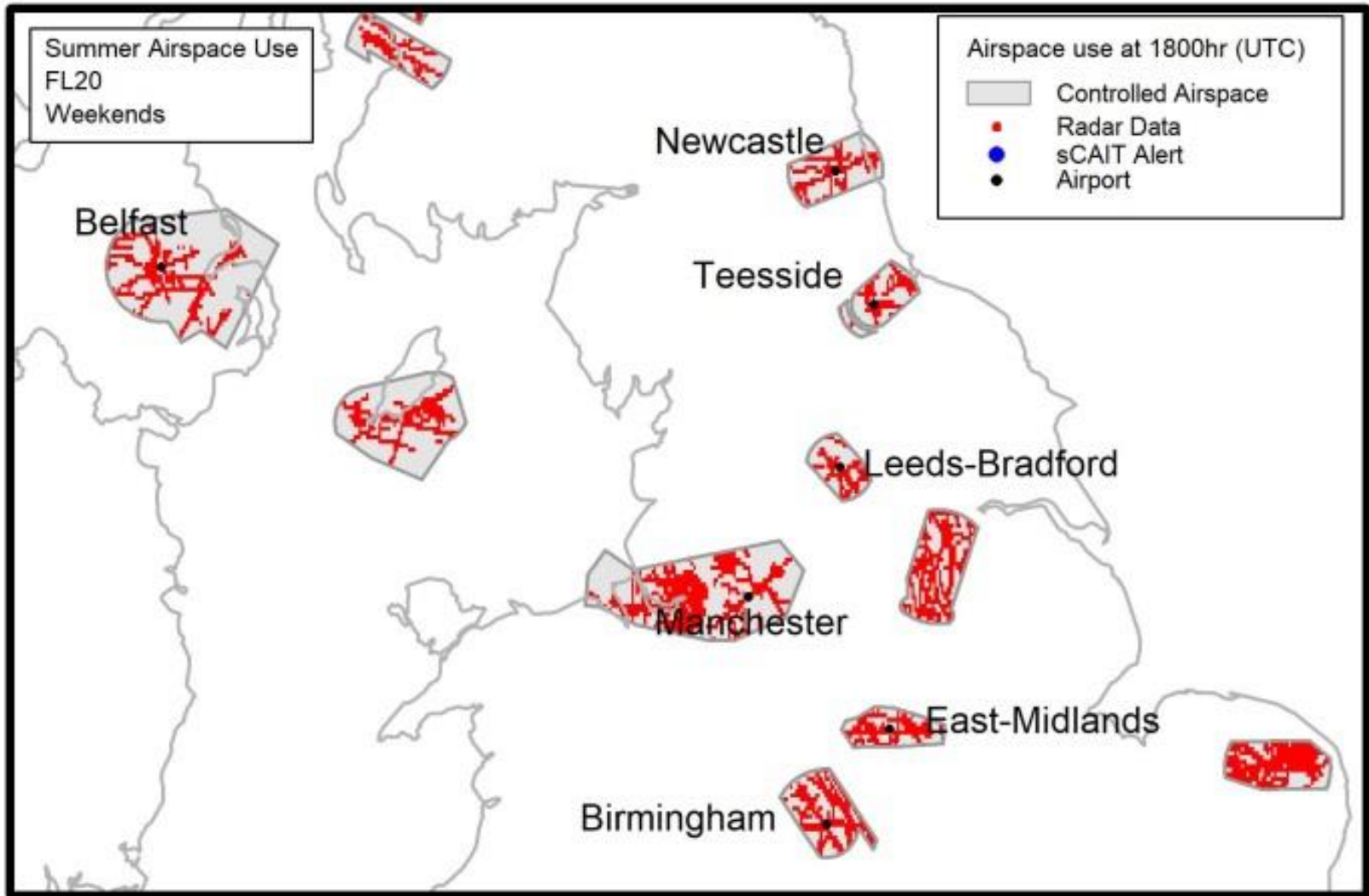


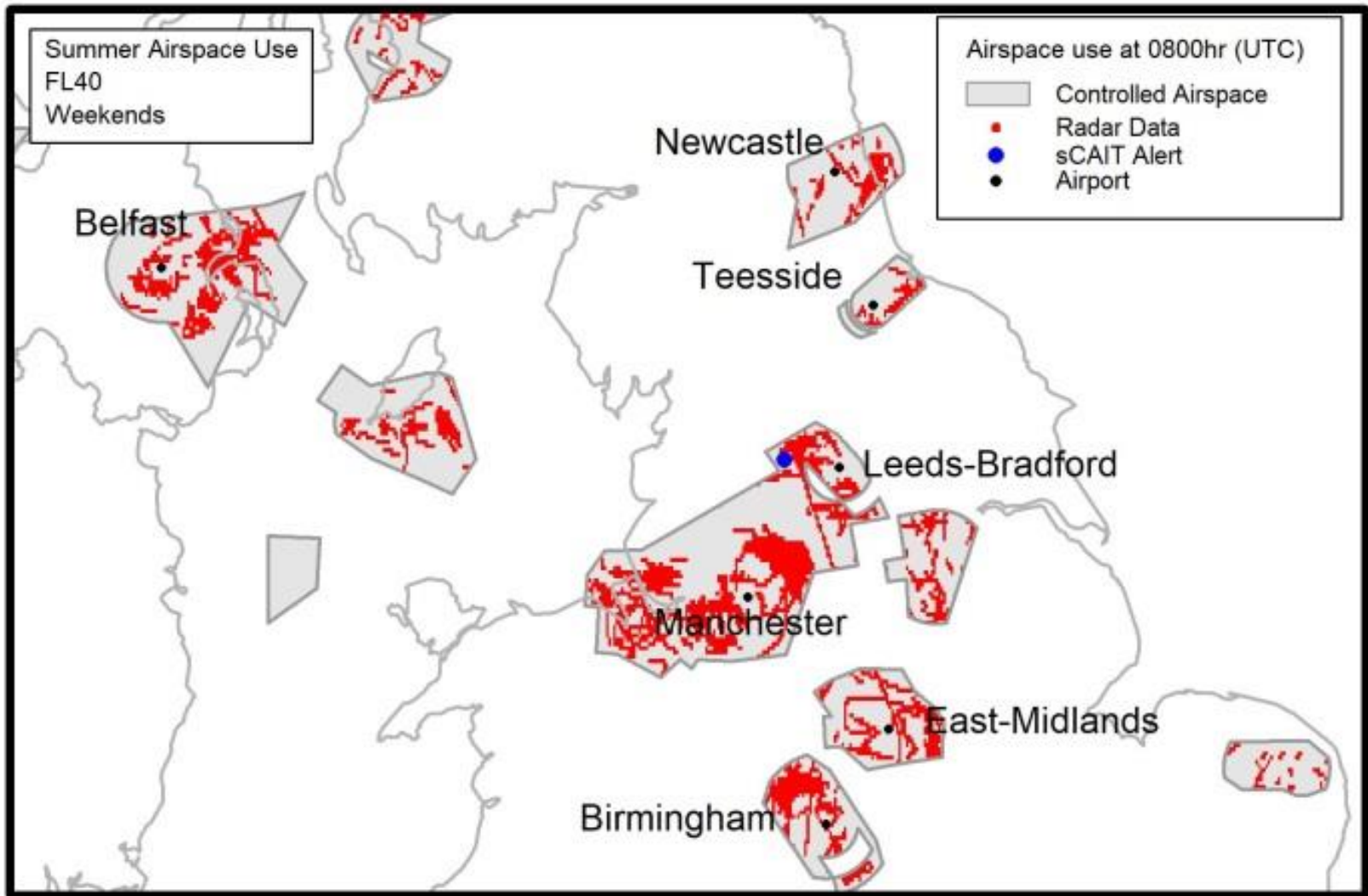


Central Summer Weekends

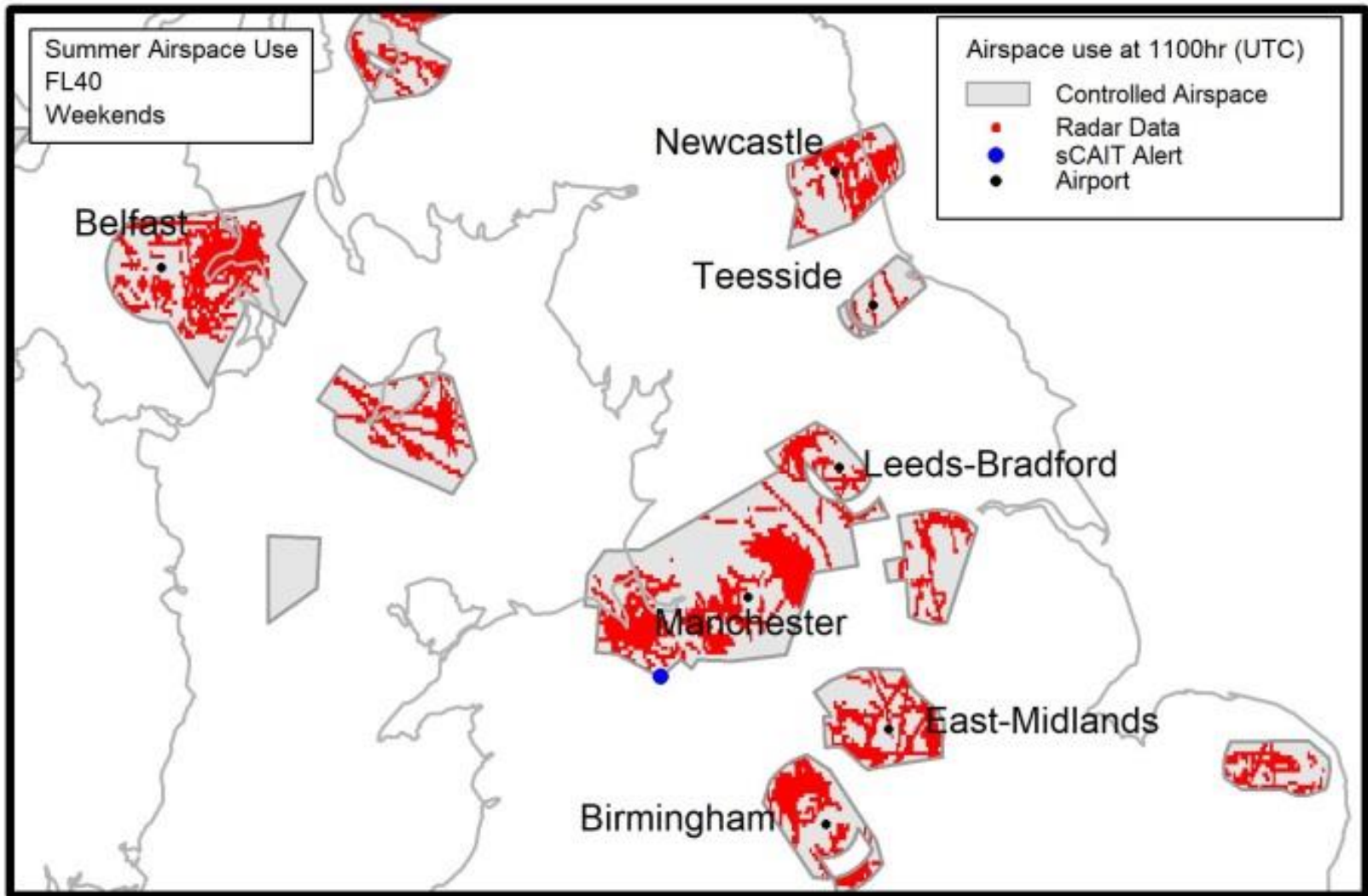


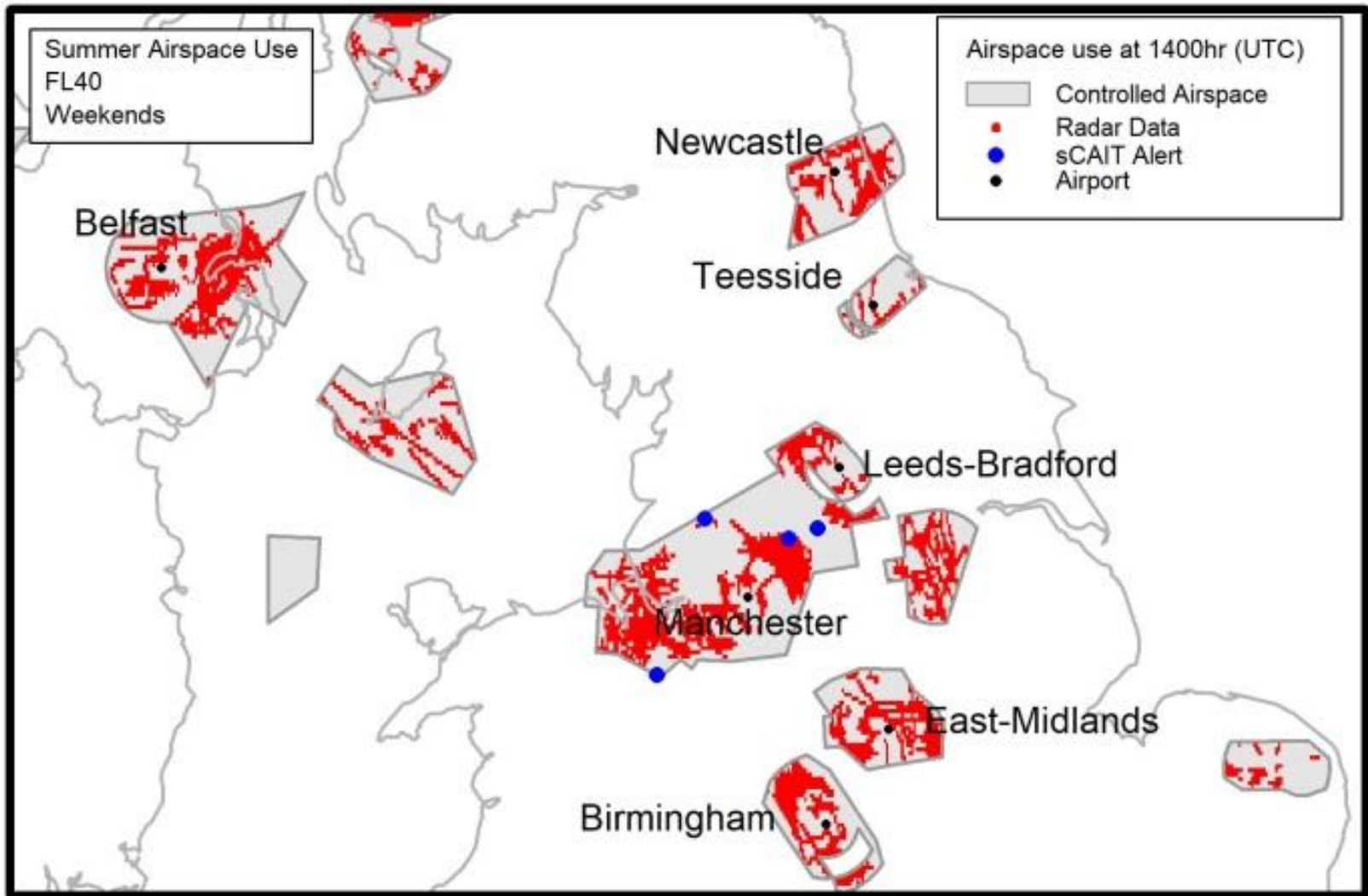
Central Summer Weekends

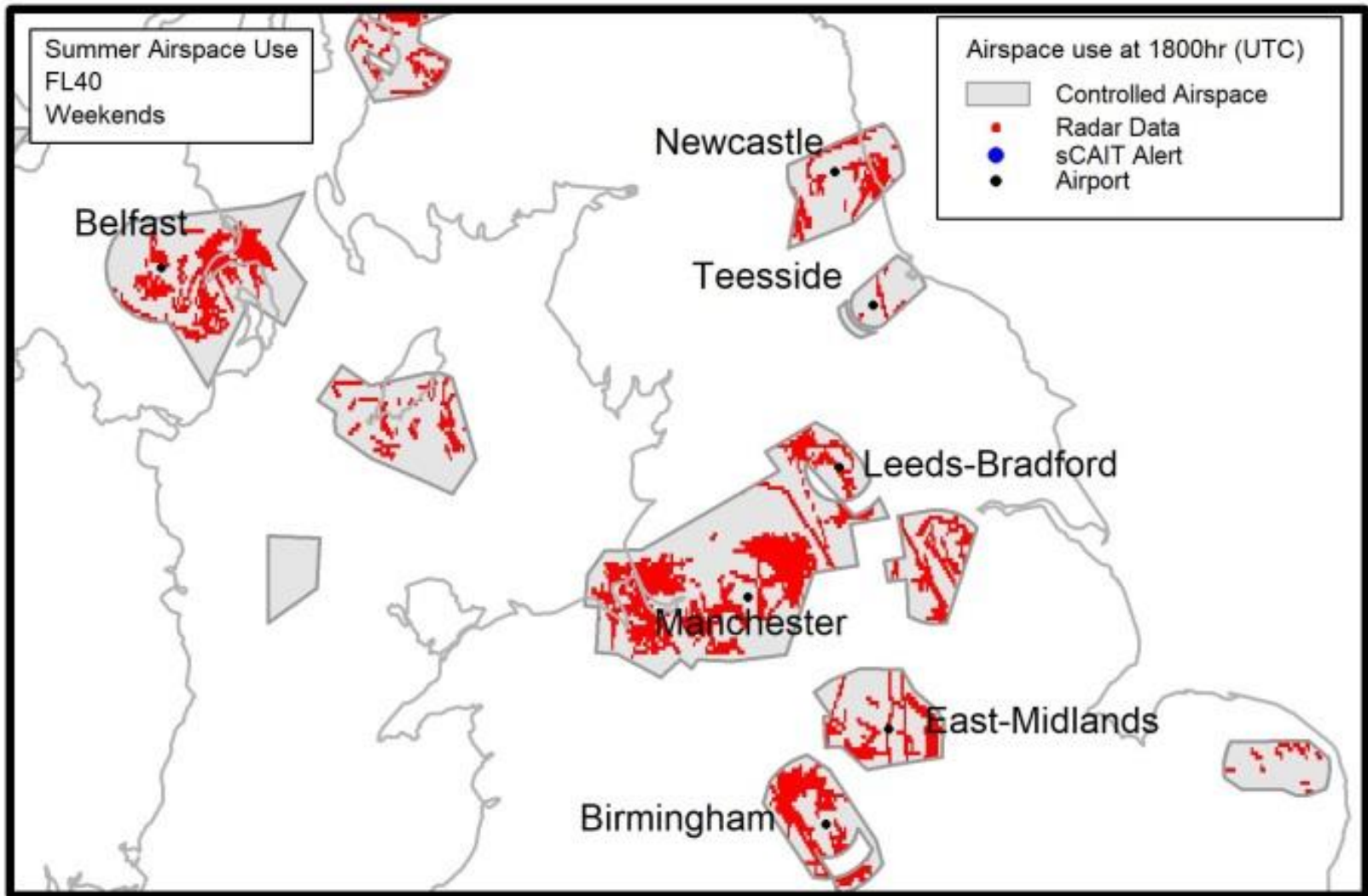




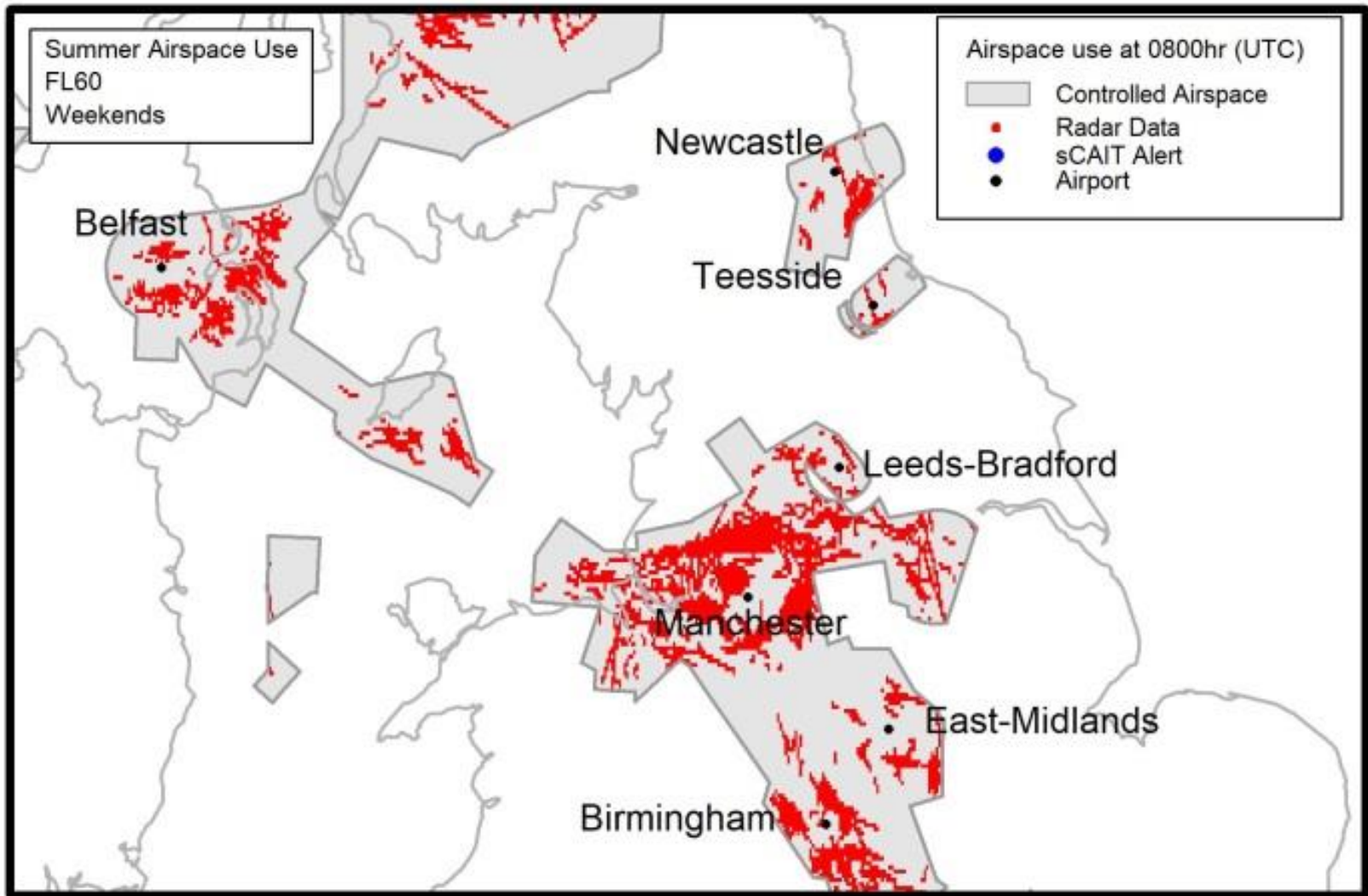
Central Summer Weekends



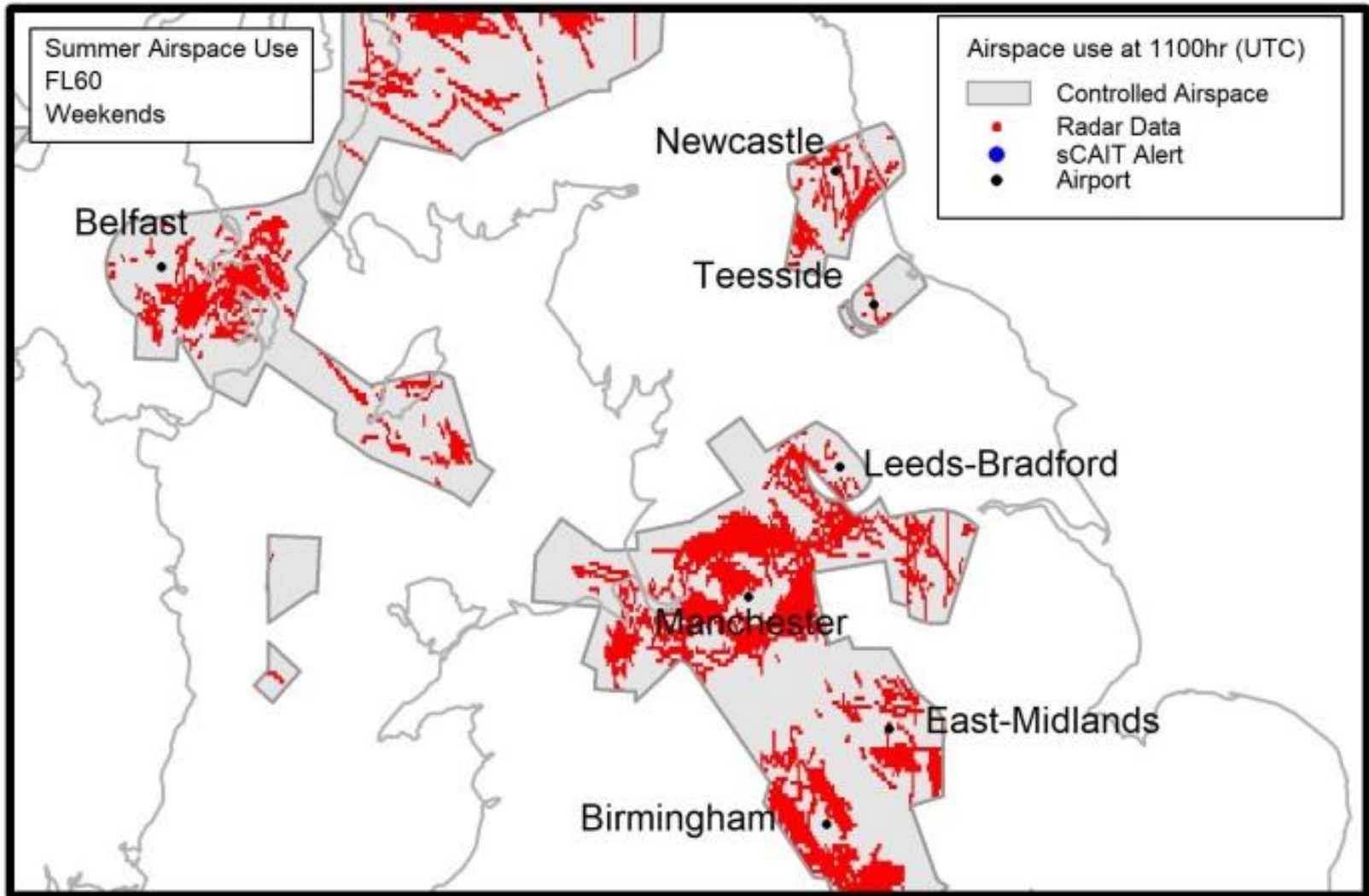




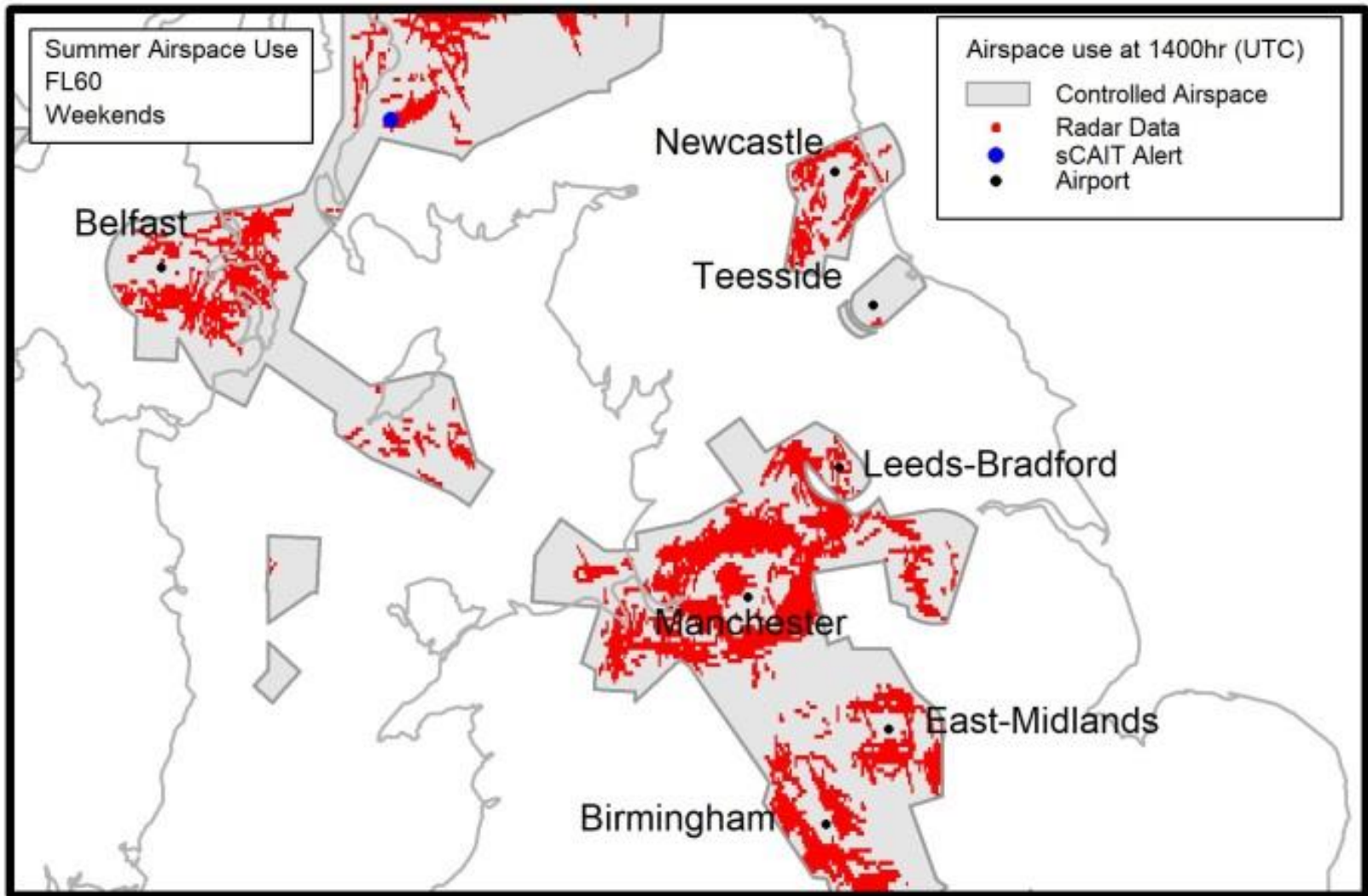
Central Summer Weekends

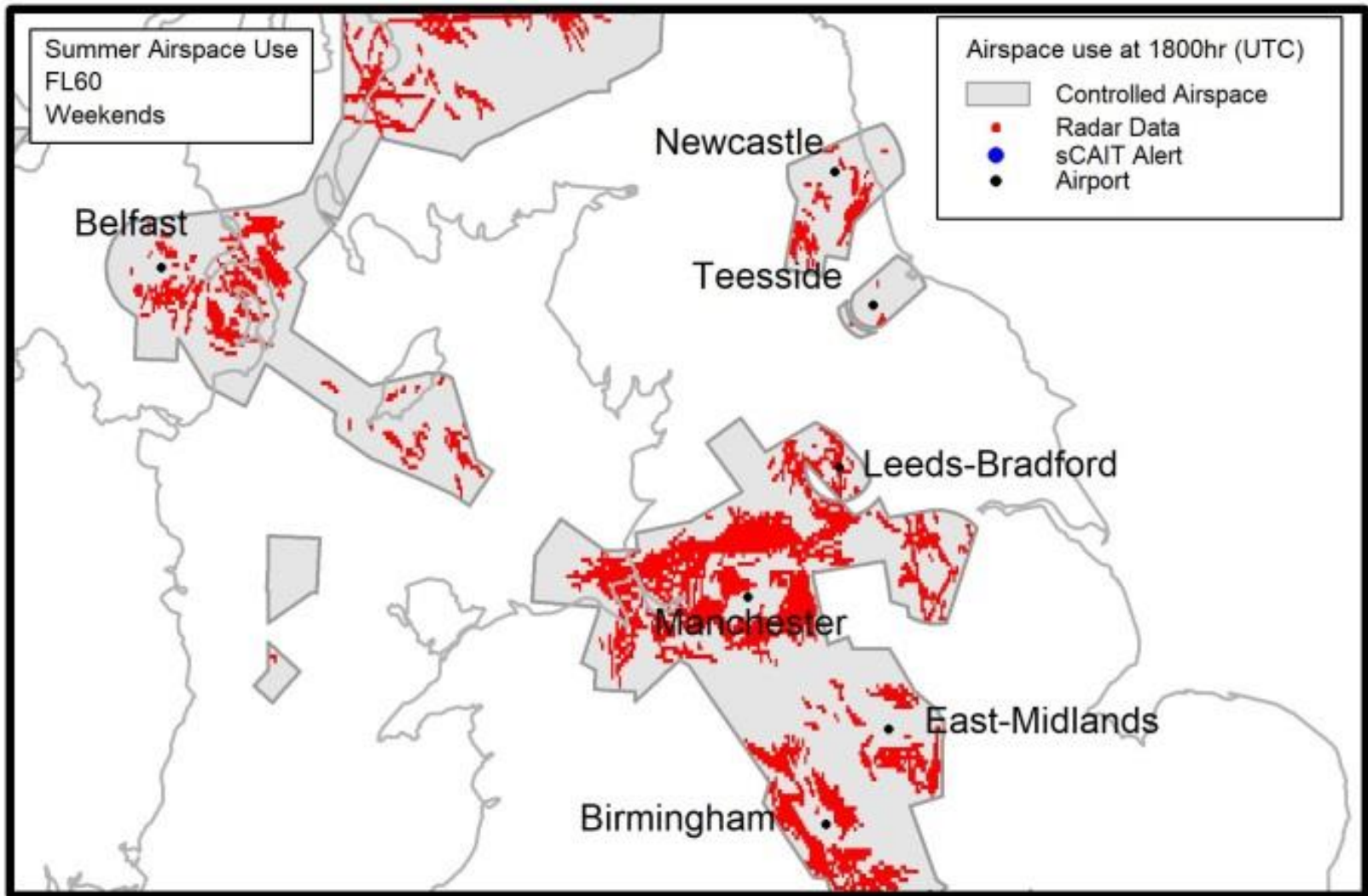


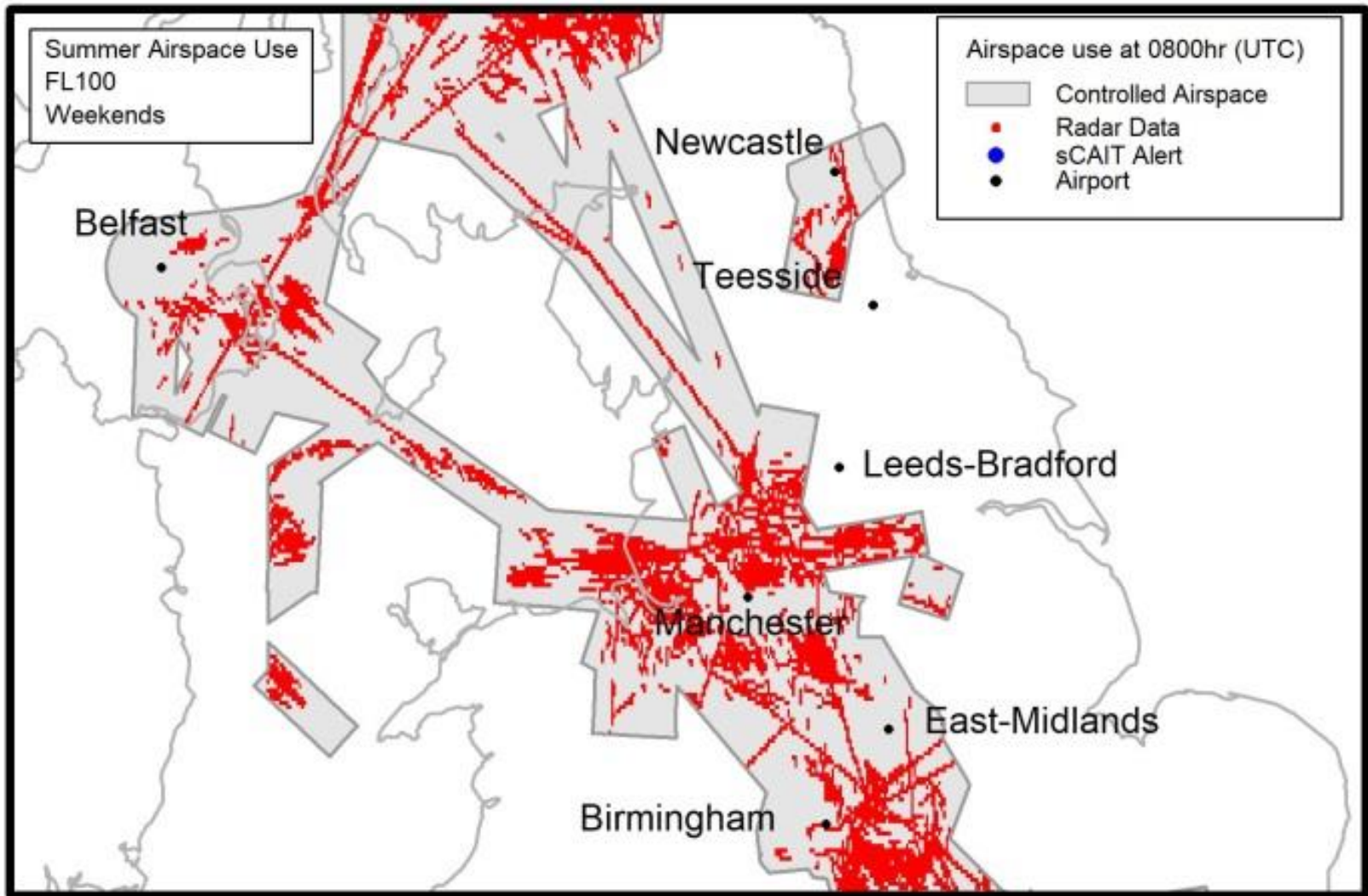
Central Summer Weekends

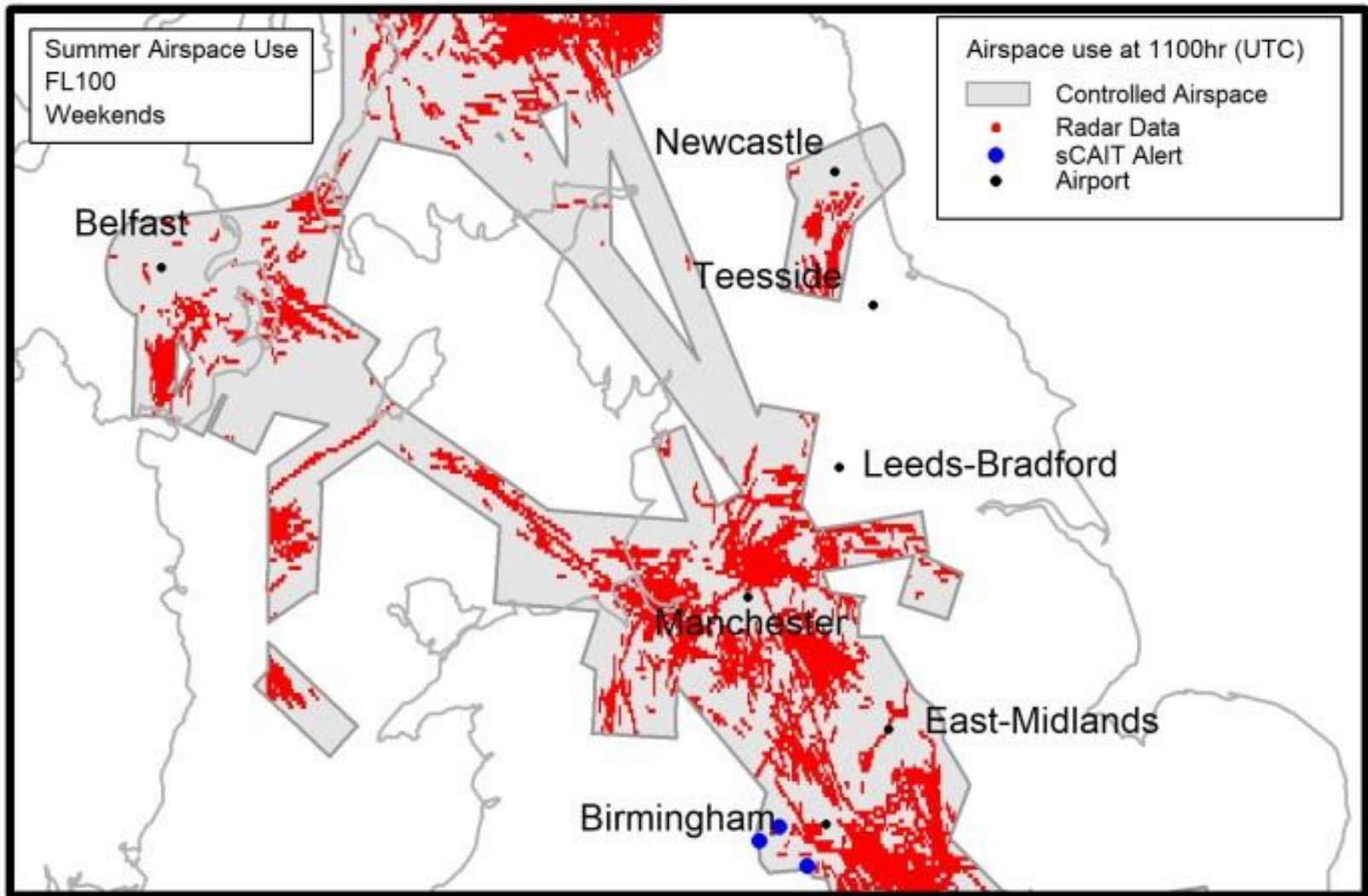


Central Summer Weekends

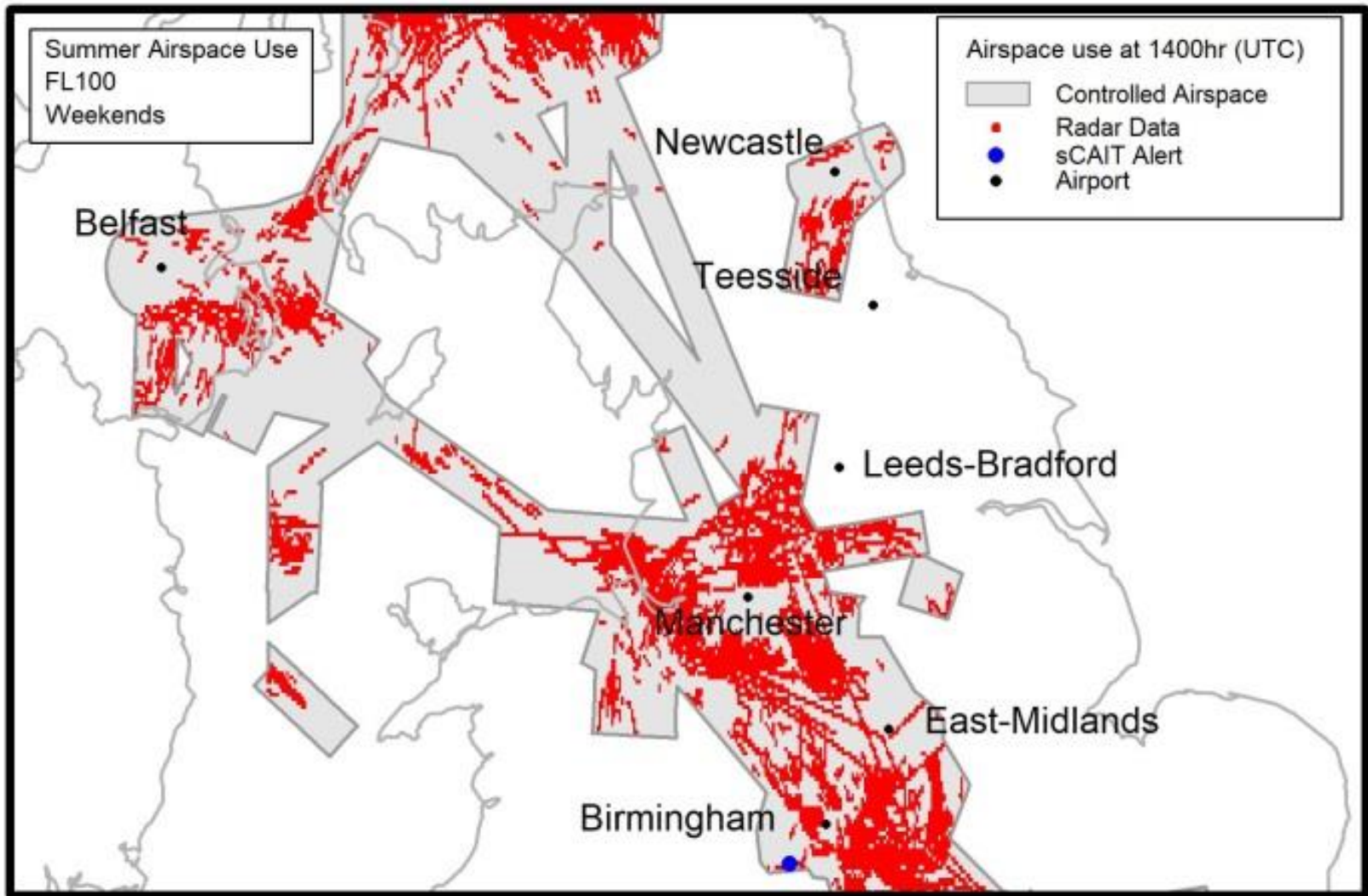








Central Summer Weekends



Central Summer Weekends

